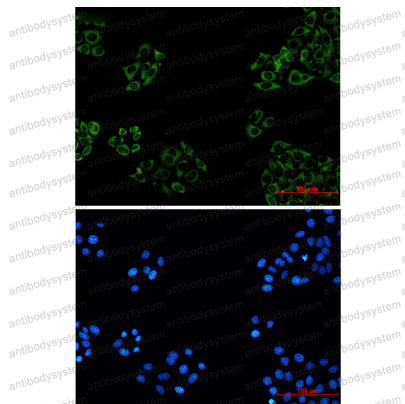


Anti-FXR1 Antibody (R1Y15)

Summary

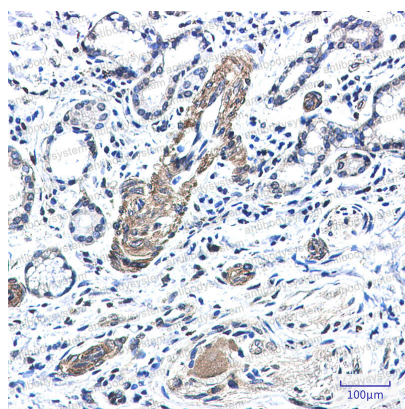
Catalog No.	RHE79801
Clone ID	R1Y15
Host species	Rabbit
Tested applications	IF: 1:50-1:200, IHC: 1:50-1:100, WB: 1:500-1:1000
Species reactivity	Human, Mouse, Rat
Form	Liquid
Storage buffer	0.01M PBS, pH 7.4, 0.05% BSA, 50% Glycerol, 0.05% Sodium azide.
Concentration	1 mg/ml
Purity	>95% by SDS-PAGE.
Clonality	Monoclonal
Isotype	IgG
Applications	IF, IHC, WB
Target	Fragile X mental retardation syndrome-related protein 1, hFXR1p, FXR1
Purification	Protein A/G purified from cell culture supernatant.
Endotoxin level	Please contact with the lab for this information.
Accession	P51114
Stability and Storage	Use a manual defrost freezer and avoid repeated freeze thaw cycles. Store at 4 °C for frequent use. Store at -20 °C for twelve months from the date of receipt.
Note	For research use only.

Data Image



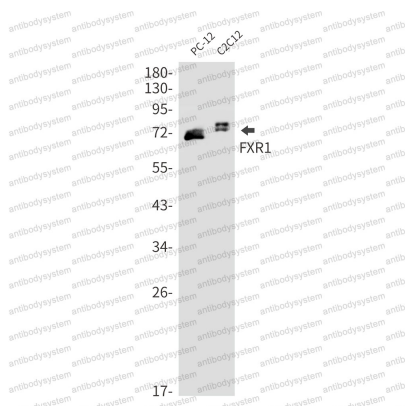
Immunofluorescence

Immunocytochemistry analysis of FXR1 (green) in Hela using FXR1 antibody, and DAPI (blue).



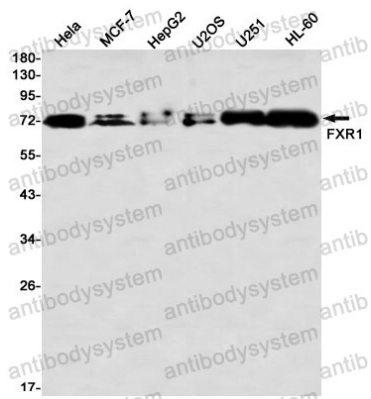
Immunohistochemical

Immunohistochemistry analysis of paraffin-embedded Human lung cancer using FXR1 antibody. High-pressure and temperature Sodium Citrate pH 6.0 was used for antigen retrieval.



Western blot

Western blot analysis of FXR1 in PC-12, C2C12 lysates using FXR1 antibody.



Western blot

Western blot analysis of FXR1 in HeLa, MCF-7, HepG2, U2OS, U251, HL-60 lysates using FXR1 antibody