

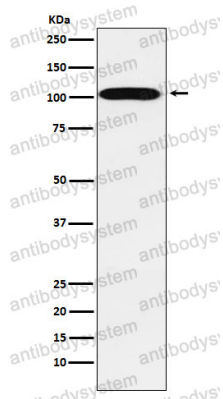
Anti-ATP1A2 Antibody (R1Y13)

Summary

Catalog No.	RHE79501
Clone ID	R1Y13
Host species	Rabbit
Tested applications	WB: 1:1000-1:2000
Species reactivity	Human, Mouse, Rat
Form	Liquid
Storage buffer	0.01M PBS, pH 7.4, 0.05% BSA, 50% Glycerol, 0.05% Sodium azide.
Concentration	1 mg/ml
Purity	>95% by SDS-PAGE.
Clonality	Monoclonal
Isotype	IgG
Applications	WB
Target	Sodium pump subunit alpha-2, KIAA0778, Na(+)/K(+) ATPase alpha-2 subunit, Sodium/potassium-transporting ATPase subunit alpha-2, ATP1A2
Purification	Protein A/G purified from cell culture supernatant.
Endotoxin level	Please contact with the lab for this information.
Accession	P50993
Stability and Storage	Use a manual defrost freezer and avoid repeated freeze thaw cycles. Store at 4 °C for frequent use. Store at -20 °C for twelve months from the date of receipt.

Note For research use only.

Data Image



Western blot

Western blot analysis of ATP1A2 expression in Human fetal heart lysate.