

Anti-MMP14 Antibody (R1X99)

Summary

Catalog No.	RHE75502
Clone ID	R1X99
Host species	Rabbit
Tested applications	IHC: 1:50-1:100, IP: 1:20, WB: 1:500-1:1000
Species reactivity	Human, Hamster
Form	Liquid
Storage buffer	0.01M PBS, pH 7.4, 0.05% BSA, 50% Glycerol, 0.05% Sodium azide.
Concentration	1 mg/ml
Purity	>95% by SDS-PAGE.
Clonality	Monoclonal
Isotype	IgG
Applications	IHC, IP, WB
Target	MT-MMP 1, Matrix metalloproteinase-14, Membrane-type matrix metalloproteinase 1, Membrane-type-1 matrix metalloproteinase, MMP14, MTMMP1, MT1-MMP, MMP-14, MMP-X1, MT1MMP
Purification	Protein A/G purified from cell culture supernatant.
Endotoxin level	Please contact with the lab for this information.
Accession	P50281

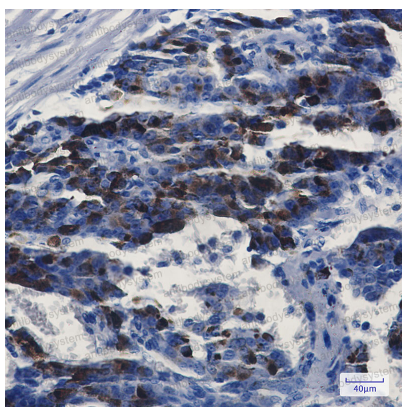
Stability and Storage

Use a manual defrost freezer and avoid repeated freeze thaw cycles. Store at 4 °C for frequent use. Store at -20 °C for twelve months from the date of receipt.

Note

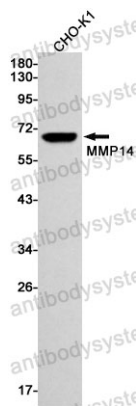
For research use only.

Data Image



Immunohistochemical

Immunohistochemistry analysis of paraffin-embedded Human breast cancer using MMP14 antibody. High-pressure and temperature Sodium Citrate pH 6.0 was used for antigen retrieval.



Western blot

Western blot analysis of MMP14 in CHO-K1 lysates using MMP14 antibody.