

Anti-CD39/ENTPD1 Antibody (R1X93)

Summary

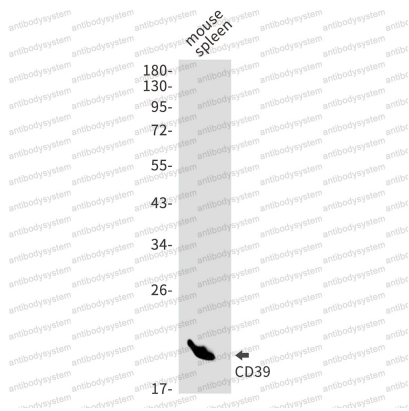
Catalog No.	RHE74001
Clone ID	R1X93
Host species	Rabbit
Tested applications	WB: 1:500-1:1000
Species reactivity	Mouse
Form	Liquid
Storage buffer	0.01M PBS, pH 7.4, 0.05% BSA, 50% Glycerol, 0.05% Sodium azide.
Concentration	1 mg/ml
Purity	>95% by SDS-PAGE.
Clonality	Monoclonal
Isotype	IgG
Applications	WB
Target	Ecto-ATP diphosphohydrolase 1, NTPDase 1, ENTPD1, Ecto-ATPase 1, Ecto-apyrase, Ecto-ATPDase 1, Ectonucleoside triphosphate diphosphohydrolase 1, CD39, Lymphoid cell activation antigen
Purification	Protein A/G purified from cell culture supernatant.
Endotoxin level	Please contact with the lab for this information.
Accession	P49961

Stability and Storage

Use a manual defrost freezer and avoid repeated freeze thaw cycles. Store at 4 °C for frequent use. Store at -20 °C for twelve months from the date of receipt.

Note

For research use only.

Data Image

Western blot

Western blot analysis of CD39 in mouse spleen lysates using CD39 antibody.