

Anti-Phospho-GSK3B (Ser9) Antibody (R1X86)

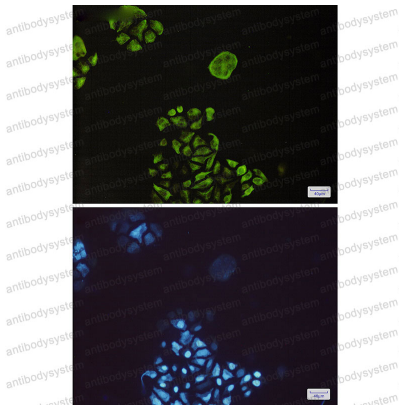
Summary

| | |
|------------------------------|---|
| Catalog No. | RHE72102 |
| Clone ID | R1X86 |
| Host species | Rabbit |
| Tested applications | IF: 1:50-1:200, IHC: 1:50-1:100, WB: 1:500-1:1000 |
| Species reactivity | Human, Mouse, Rat |
| Form | Liquid |
| Storage buffer | 0.01M PBS, pH 7.4, 0.05% BSA, 50% Glycerol, 0.05% Sodium azide. |
| Concentration | 1 mg/ml |
| Purity | >95% by SDS-PAGE. |
| Clonality | Monoclonal |
| Isotype | IgG |
| Applications | IF, IHC, WB |
| Target | Glycogen synthase kinase-3 beta, GSK3B, Serine/threonine-protein kinase GSK3B, GSK-3 beta |
| Purification | Protein A/G purified from cell culture supernatant. |
| Endotoxin level | Please contact with the lab for this information. |
| Accession | P49841 |
| Stability and Storage | Use a manual defrost freezer and avoid repeated freeze thaw cycles. Store at 4 °C for frequent use. Store at -20 °C for twelve months from the date of receipt. |

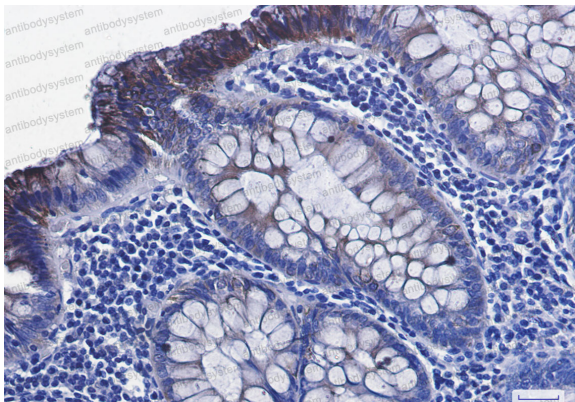
Note

For research use only.

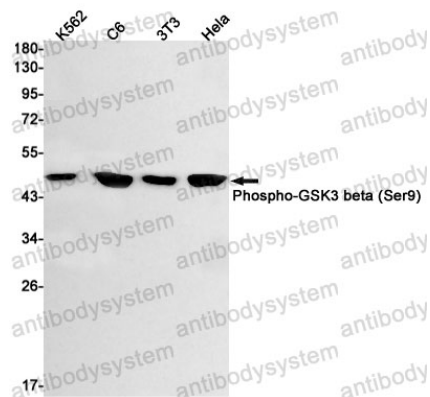
Data Image

**Immunofluorescence**

Immunocytochemistry analysis of Phospho-GSK3 beta (Ser9)(green) in Hela using Phospho-GSK3 beta (Ser9) antibody, and DAPI(blue)

**Immunohistochemical**

Immunohistochemistry analysis of paraffin-embedded Human colon cancer using Phospho-GSK3 beta (Ser9) antibody. High-pressure and temperature Sodium Citrate pH 6.0 was used for antigen retrieval.



Western blot

Western blot analysis of Phospho-GSK3 beta (Ser9) in K562, C6, 3T3, HeLa lysates using Phospho-GSK3 beta (Ser9) antibody.