

Anti-HINT1 Antibody (R1X73)

Summary

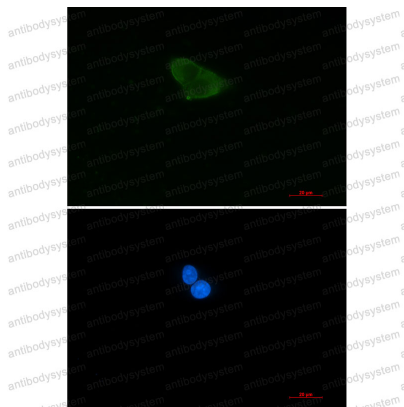
Catalog No.	RHE70801
Clone ID	R1X73
Host species	Rabbit
Tested applications	IF: 1:50-1:200, IP: 1:20, WB: 1:500-1:1000
Species reactivity	Human
Form	Liquid
Storage buffer	0.01M PBS, pH 7.4, 0.05% BSA, 50% Glycerol, 0.05% Sodium azide.
Concentration	1 mg/ml
Purity	>95% by SDS-PAGE.
Clonality	Monoclonal
Isotype	IgG
Applications	IF, IP, WB
Target	Histidine triad nucleotide-binding protein 1, HINT, Adenosine 5'-monophosphoramidase, HINT1, PKCI-1, PRKCNH1, Protein kinase C inhibitor 1, Protein kinase C-interacting protein 1, PKCI1
Purification	Protein A/G purified from cell culture supernatant.
Endotoxin level	Please contact with the lab for this information.
Accession	P49773

Stability and Storage

Use a manual defrost freezer and avoid repeated freeze thaw cycles. Store at 4 °C for frequent use. Store at -20 °C for twelve months from the date of receipt.

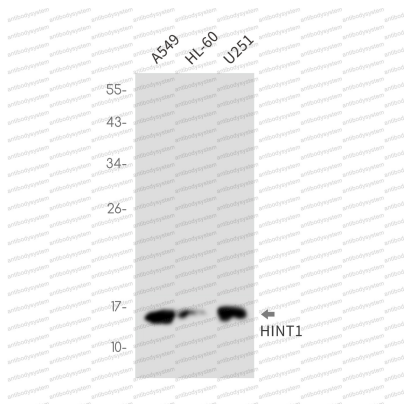
Note

For research use only.

Data Image

Immunofluorescence

Immunocytochemistry analysis of HINT1 (green) in HeLa using HINT1 antibody, and DAPI (blue).



Western blot

Western blot analysis of HINT1 in A549, HL-60, U251 lysates using HINT1 antibody.