

Anti-HINT1 Antibody (R1X72)

Summary

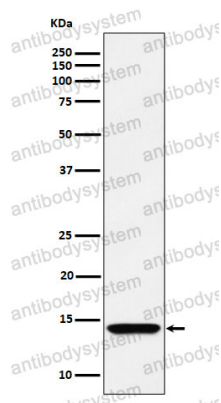
Catalog No.	RHE70802
Clone ID	R1X72
Host species	Rabbit
Tested applications	IF: 1:50-1:200, IHC: 1:100-1:200, WB: 1:1000-1:2000
Species reactivity	Human, Mouse, Rat
Form	Liquid
Storage buffer	0.01M PBS, pH 7.4, 0.05% BSA, 50% Glycerol, 0.05% Sodium azide.
Concentration	1 mg/ml
Purity	>95% by SDS-PAGE.
Clonality	Monoclonal
Isotype	IgG
Applications	IF, IHC, WB
Target	Histidine triad nucleotide-binding protein 1, HINT, Adenosine 5'-monophosphoramidase, HINT1, PKCI-1, PRKCNH1, Protein kinase C inhibitor 1, Protein kinase C-interacting protein 1, PKCI1
Purification	Protein A/G purified from cell culture supernatant.
Endotoxin level	Please contact with the lab for this information.
Accession	P49773

Stability and Storage

Use a manual defrost freezer and avoid repeated freeze thaw cycles. Store at 4 °C for frequent use. Store at -20 °C for twelve months from the date of receipt.

Note

For research use only.

Data Image

Western blot

Western blot analysis of HINT1 expression in 293 cell lysate.