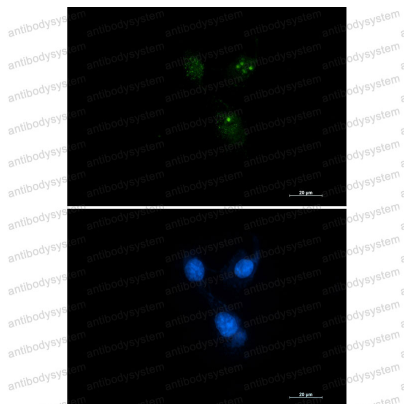


Anti-PSEN1/Presenilin-1 Antibody (R1X71)

Summary

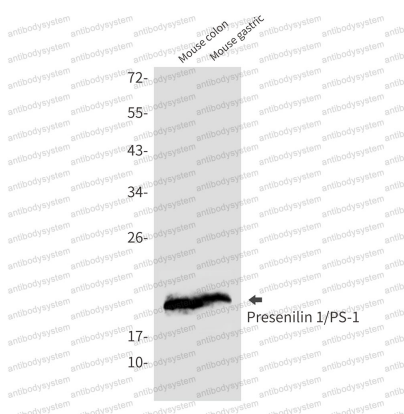
Catalog No.	RHE70504
Clone ID	R1X71
Host species	Rabbit
Tested applications	IF: 1:50-1:200, IP: 1:20, WB: 1:500-1:1000
Species reactivity	Human, Mouse, Rat
Form	Liquid
Storage buffer	0.01M PBS, pH 7.4, 0.05% BSA, 50% Glycerol, 0.05% Sodium azide.
Concentration	1 mg/ml
Purity	>95% by SDS-PAGE.
Clonality	Monoclonal
Isotype	IgG
Applications	IF, IP, WB
Target	PSEN1, AD3, Presenilin-1, Protein S182, PS-1, PSNL1, PS1-CTF12, PS1
Purification	Protein A/G purified from cell culture supernatant.
Endotoxin level	Please contact with the lab for this information.
Accession	P49768
Stability and Storage	Use a manual defrost freezer and avoid repeated freeze thaw cycles. Store at 4 °C for frequent use. Store at -20 °C for twelve months from the date of receipt.
Note	For research use only.

Data Image



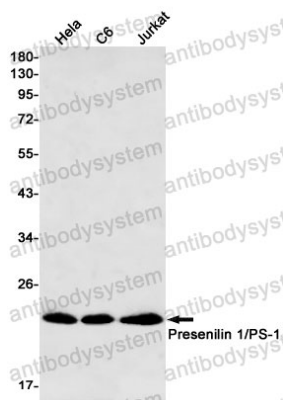
Immunofluorescence

Immunocytochemistry analysis of Presenilin 1 (green) in SKOV-3 using Presenilin 1 antibody, and DAPI(blue).



Western blot

Western blot analysis of Presenilin 1/PS1 in mouse colon, mouse gastric lysates using Presenilin 1/PS1 antibody.



Western blot

Western blot analysis of Presenilin 1/PS1 in HeLa, C6, Jurkat lysates using Presenilin 1/PS1 antibody