

Anti-MCM2 Antibody (R1X59)

Summary

Catalog No.	RHE68801
Clone ID	R1X59
Host species	Rabbit
Tested applications	IF: 1:50-1:200, IHC: 1:50-1:100, IP: 1:20, WB: 1:500-1:1000
Species reactivity	Human
Form	Liquid
Storage buffer	0.01M PBS, pH 7.4, 0.05% BSA, 50% Glycerol, 0.05% Sodium azide.
Concentration	1 mg/ml
Purity	>95% by SDS-PAGE.
Clonality	Monoclonal
Isotype	IgG
Applications	IF, IHC, IP, WB
Target	CCNL1, KIAA0030, Minichromosome maintenance protein 2 homolog, Nuclear protein BM28, MCM2, CDCL1, BM28, DNA replication licensing factor MCM2
Purification	Protein A/G purified from cell culture supernatant.
Endotoxin level	Please contact with the lab for this information.
Accession	P49736

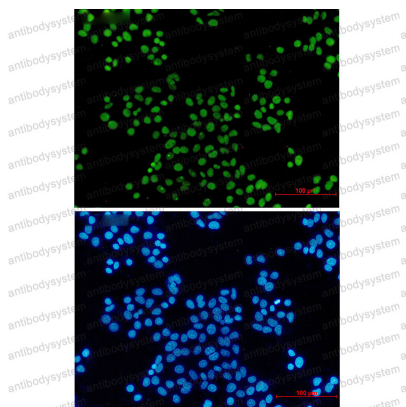
Stability and Storage

Use a manual defrost freezer and avoid repeated freeze thaw cycles. Store at 4 °C for frequent use. Store at -20 °C for twelve months from the date of receipt.

Note

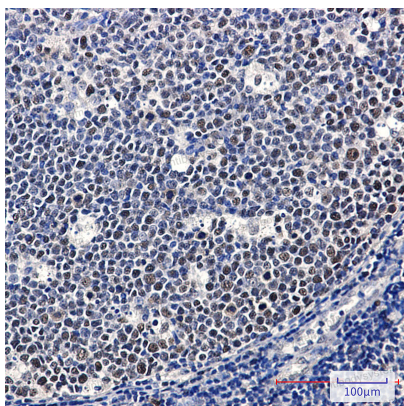
For research use only.

Data Image



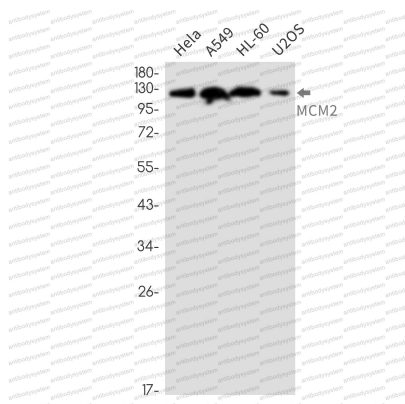
Immunofluorescence

Immunocytochemistry analysis of MCM2 (green) in hela using MCM2 antibody, and DAPI (blue)



Immunohistochemical

Immunohistochemistry analysis of paraffin-embedded Human tonsil using MCM2 antibody. High-pressure and temperature Sodium Citrate pH 6.0 was used for antigen retrieval.



Western blot

Western blot analysis of MCM2 in HeLa, A549, HL-60, U2OS lysates using MCM2 antibody.