

Anti-MCM2 Antibody (R1X58)

Summary

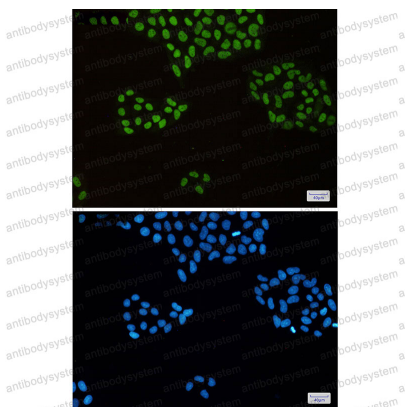
Catalog No.	RHE68806
Clone ID	R1X58
Host species	Rabbit
Tested applications	IF: 1:50-1:200, WB: 1:500-1:1000
Species reactivity	Human, Mouse, Rat
Form	Liquid
Storage buffer	0.01M PBS, pH 7.4, 0.05% BSA, 50% Glycerol, 0.05% Sodium azide.
Concentration	1 mg/ml
Purity	>95% by SDS-PAGE.
Clonality	Monoclonal
Isotype	IgG
Applications	IF, WB
Target	CCNL1, KIAA0030, Minichromosome maintenance protein 2 homolog, Nuclear protein BM28, MCM2, CDCL1, BM28, DNA replication licensing factor MCM2
Purification	Protein A/G purified from cell culture supernatant.
Endotoxin level	Please contact with the lab for this information.
Accession	P49736

Stability and Storage

Use a manual defrost freezer and avoid repeated freeze thaw cycles. Store at 4 °C for frequent use. Store at -20 °C for twelve months from the date of receipt.

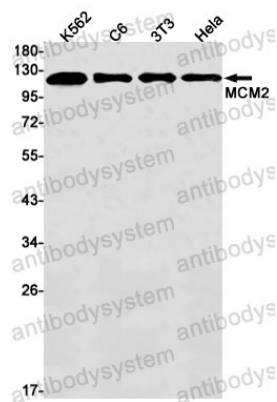
Note

For research use only.

Data Image

Immunofluorescence

Immunocytochemistry analysis of MCM2(green) in HeLa using MCM2 antibody, and DAPI(blue)



Western blot

Western blot analysis of MCM2 in K562, C6, 3T3, HeLa lysates using MCM2 antibody.