

Anti-Phospho-MCM2 (Ser27) Antibody (R1X56)

Summary

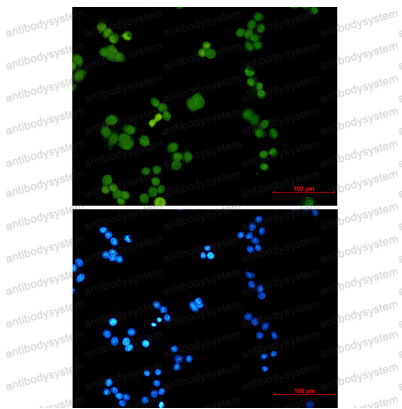
Catalog No.	RHE68804
Clone ID	R1X56
Host species	Rabbit
Tested applications	IF: 1:50-1:200, IHC: 1:50-1:100, IP: 1:20, WB: 1:500-1:1000
Species reactivity	Human
Form	Liquid
Storage buffer	0.01M PBS, pH 7.4, 0.05% BSA, 50% Glycerol, 0.05% Sodium azide.
Concentration	1 mg/ml
Purity	>95% by SDS-PAGE.
Clonality	Monoclonal
Isotype	IgG
Applications	IF, IHC, IP, WB
Target	CCNL1, KIAA0030, Minichromosome maintenance protein 2 homolog, Nuclear protein BM28, MCM2, CDCL1, BM28, DNA replication licensing factor MCM2
Purification	Protein A/G purified from cell culture supernatant.
Endotoxin level	Please contact with the lab for this information.
Accession	P49736

Stability and Storage

Use a manual defrost freezer and avoid repeated freeze thaw cycles. Store at 4 °C for frequent use. Store at -20 °C for twelve months from the date of receipt.

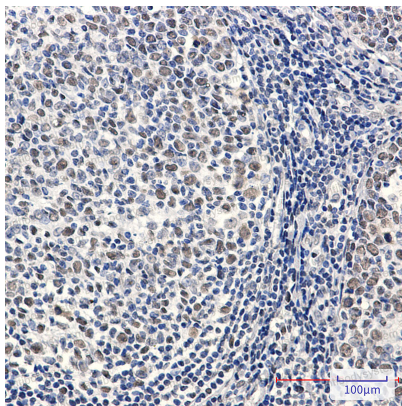
Note

For research use only.

Data Image

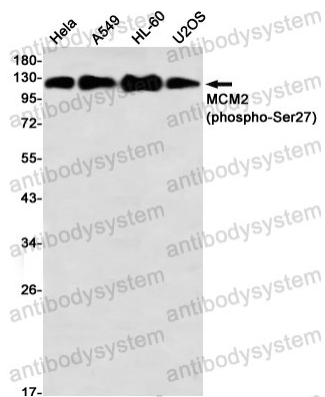
Immunofluorescence

Immunocytochemistry analysis of Phospho-MCM2 (Ser27) (green) in HeLa using Phospho-MCM2 (Ser27) antibody, and DAPI (blue).



Immunohistochemical

Immunohistochemistry analysis of paraffin-embedded Human tonsil using MCM2 (Phospho-Ser27) antibody. High-pressure and temperature Sodium Citrate pH 6.0 was used for antigen retrieval.



Western blot

Western blot analysis of MCM2 (Phospho-Ser27) in HeLa, A549, HL-60, U2OS lysates using MCM2 (Phospho-Ser27) antibody.