

Anti-CASP4 Antibody (R1X48)

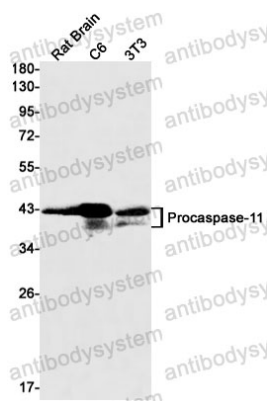
Summary

Catalog No.	RME67601
Clone ID	R1X48
Host species	Rabbit
Tested applications	IP: 1:20, WB: 1:500-1:1000
Species reactivity	Human, Mouse, Rat
Form	Liquid
Storage buffer	0.01M PBS, pH 7.4, 0.05% BSA, 50% Glycerol, 0.05% Sodium azide.
Concentration	1 mg/ml
Purity	>95% by SDS-PAGE.
Clonality	Monoclonal
Isotype	IgG
Applications	IP, WB
Target	Mih1, ICH2, CASP-4, ICE and Ced-3 homolog 2, CASP4, Protease TX, Caspase-4, ICE(rel)-II, ICH-2
Purification	Protein A/G purified from cell culture supernatant.
Endotoxin level	Please contact with the lab for this information.
Accession	P70343
Stability and Storage	Use a manual defrost freezer and avoid repeated freeze thaw cycles. Store at 4 °C for frequent use. Store at -20 °C for twelve months from the date of receipt.

Note

For research use only.

Data Image



Western blot

Western blot analysis of Caspase11 in C6, 3T3, HeLa lysates using Caspase 11 antibody.