

# Anti-CDC34 Antibody (R1X41)

## Summary

---

<b>Catalog No.</b>	RHE65501
<b>Clone ID</b>	R1X41
<b>Host species</b>	Rabbit
<b>Tested applications</b>	IP: 1:20, WB: 1:500-1:1000
<b>Species reactivity</b>	Human, Mouse, Rat
<b>Form</b>	Liquid
<b>Storage buffer</b>	0.01M PBS, pH 7.4, 0.05% BSA, 50% Glycerol, 0.05% Sodium azide.
<b>Concentration</b>	1 mg/ml
<b>Purity</b>	>95% by SDS-PAGE.
<b>Clonality</b>	Monoclonal
<b>Isotype</b>	IgG
<b>Applications</b>	IP, WB
<b>Target</b>	Ubiquitin-conjugating enzyme E2 R1, (E3-independent) E2 ubiquitin-conjugating enzyme R1, Ubiquitin-protein ligase R1, Ubiquitin-conjugating enzyme E2-32 kDa complementing, Ubiquitin-conjugating enzyme E2-CDC34, E2 ubiquitin-conjugating enzyme R1, CDC34, UBCH3, UBE2R1
<b>Purification</b>	Protein A/G purified from cell culture supernatant.
<b>Endotoxin level</b>	Please contact with the lab for this information.
<b>Accession</b>	P49427

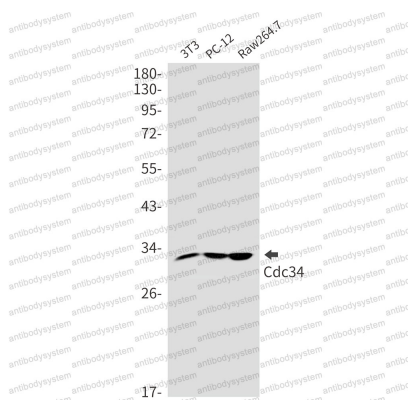
## Stability and Storage

Use a manual defrost freezer and avoid repeated freeze thaw cycles. Store at 4 °C for frequent use. Store at -20 °C for twelve months from the date of receipt.

## Note

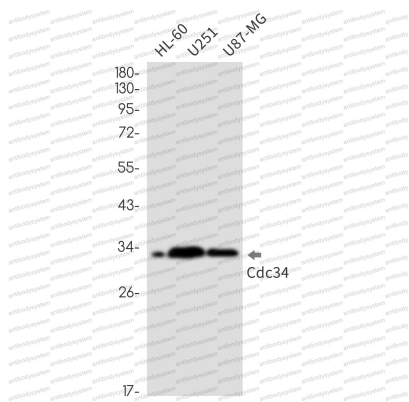
For research use only.

## Data Image



Western blot

Western blot analysis of Cdc34 in 3T3, PC-12, Raw264.7 lysates using CDC34 antibody.



Western blot

Western blot analysis of Cdc34 in HL-60, U251, U87-MG lysates using Cdc34 antibody.