

Anti-ALDH7A1 Antibody (R1X39)

Summary

Catalog No.	RHE65401
Clone ID	R1X39
Host species	Rabbit
Tested applications	IF: 1:50-1:200, IP: 1:20, WB: 1:500-1:1000
Species reactivity	Human, Mouse
Form	Liquid
Storage buffer	0.01M PBS, pH 7.4, 0.05% BSA, 50% Glycerol, 0.05% Sodium azide.
Concentration	1 mg/ml
Purity	>95% by SDS-PAGE.
Clonality	Monoclonal
Isotype	IgG
Applications	IF, IP, WB
Target	ALDH7A1, Delta1-piperideine-6-carboxylate dehydrogenase, Antiquitin-1, P6c dehydrogenase, Alpha-AASA dehydrogenase, Alpha-aminoadipic semialdehyde dehydrogenase, Aldehyde dehydrogenase family 7 member A1, Betaine aldehyde dehydrogenase, ATQ1
Purification	Protein A/G purified from cell culture supernatant.
Endotoxin level	Please contact with the lab for this information.
Accession	P49419

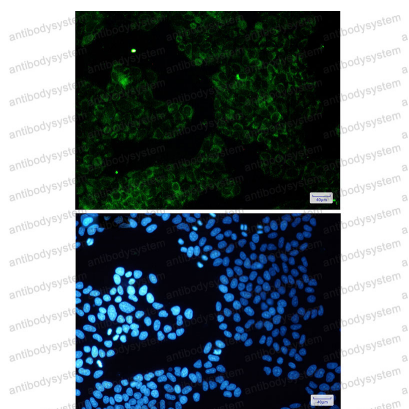
Stability and Storage

Use a manual defrost freezer and avoid repeated freeze thaw cycles. Store at 4 °C for frequent use. Store at -20 °C for twelve months from the date of receipt.

Note

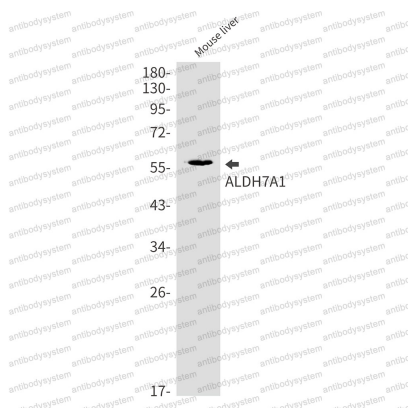
For research use only.

Data Image



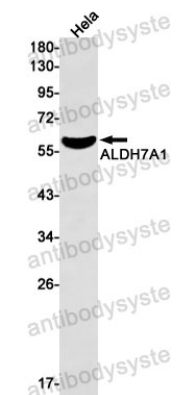
Immunofluorescence

Immunocytochemistry analysis of ALDH7A1(green) in Hela using ALDH7A1 antibody, and DAPI(blue)



Western blot

Western blot analysis of ALDH7A1 in mouse liver lysates using ALDH7A1 antibody.



Western blot

Western blot analysis of ALDH7A1 in HeLa lysates using ALDH7A1 antibody.