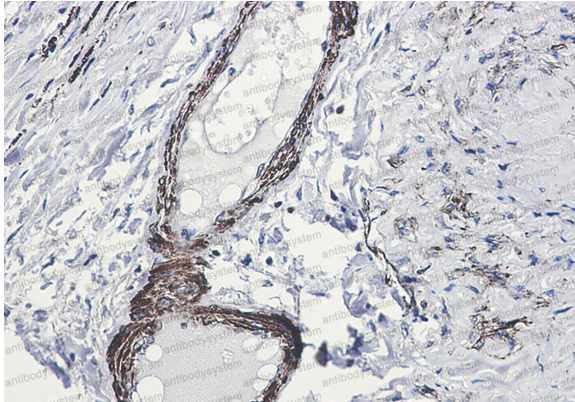


Anti-Phospho-ARRB1 (Ser412) Antibody (R1X37)

Summary

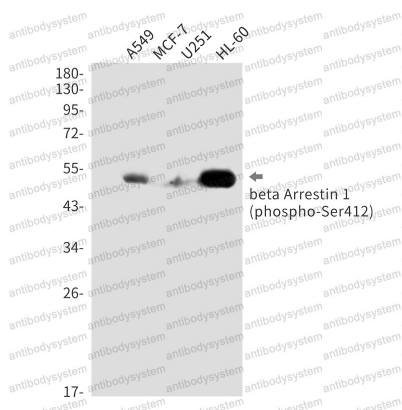
Catalog No.	RHE65101
Clone ID	R1X37
Host species	Rabbit
Tested applications	IHC: 1:50-1:100, IP: 1:20, WB: 1:500-1:1000
Species reactivity	Human
Form	Liquid
Storage buffer	0.01M PBS, pH 7.4, 0.05% BSA, 50% Glycerol, 0.05% Sodium azide.
Concentration	1 mg/ml
Purity	>95% by SDS-PAGE.
Clonality	Monoclonal
Isotype	IgG
Applications	IHC, IP, WB
Target	ARRB1, Beta-arrestin-1, Non-visual arrestin-2, ARR1, Arrestin beta-1
Purification	Protein A/G purified from cell culture supernatant.
Endotoxin level	Please contact with the lab for this information.
Accession	P49407
Stability and Storage	Use a manual defrost freezer and avoid repeated freeze thaw cycles. Store at 4 °C for frequent use. Store at -20 °C for twelve months from the date of receipt.
Note	For research use only.

Data Image



Immunohistochemical

Immunohistochemistry analysis of paraffin-embedded Human lung cancer using beta Arrestin 1 (Phospho-Ser412) antibody. High-pressure and temperature Sodium Citrate pH 6.0 was used for antigen retrieval.



Western blot

Western blot analysis of Phospho-beta Arrestin 1 (Ser412) in A549, MCF-7, U251, HL-60 lysates using Phospho-beta Arrestin 1 (Ser412) antibody.