

Anti-LMAN1 Antibody (R1X29)

Summary

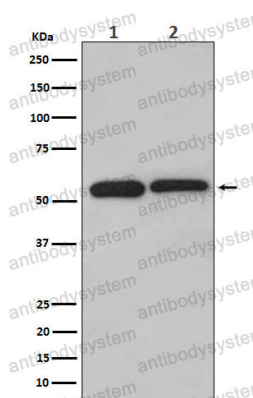
Catalog No.	RHE63703
Clone ID	R1X29
Host species	Rabbit
Tested applications	IF: 1:50-1:200, IHC: 1:100-1:200, WB: 1:1000-1:2000
Species reactivity	Human, Mouse, Rat
Form	Liquid
Storage buffer	0.01M PBS, pH 7.4, 0.05% BSA, 50% Glycerol, 0.05% Sodium azide.
Concentration	1 mg/ml
Purity	>95% by SDS-PAGE.
Clonality	Monoclonal
Isotype	IgG
Applications	IF, IHC, WB
Target	LMAN1, Protein ERGIC-53, Lectin mannose-binding 1, ERGIC53, Intracellular mannose-specific lectin MR60, ER-Golgi intermediate compartment 53 kDa protein, Gp58, F5F8D
Purification	Protein A/G purified from cell culture supernatant.
Endotoxin level	Please contact with the lab for this information.
Accession	P49257

Stability and Storage

Use a manual defrost freezer and avoid repeated freeze thaw cycles. Store at 4 °C for frequent use. Store at -20 °C for twelve months from the date of receipt.

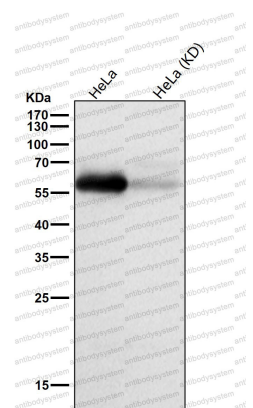
Note

For research use only.

Data Image

Western blot

Western blot analysis of LMAN1 expression in (1) HeLa cell lysate; (2) Jurkat cell lysate.



Western blot

All lanes use the Antibody at 1:1K dilution for 1 hour at room temperature.