

Anti-MAPKAPK2 Antibody (R1X28)

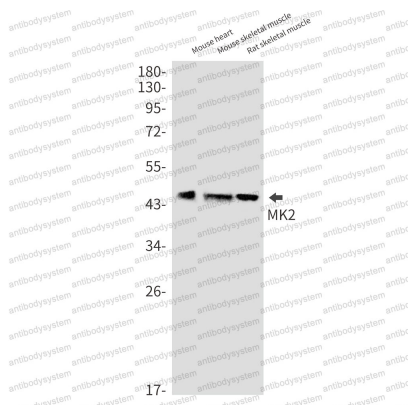
Summary

Catalog No.	RHE62701
Clone ID	R1X28
Host species	Rabbit
Tested applications	IP: 1:20, WB: 1:500-1:1000
Species reactivity	Human, Mouse, Rat
Form	Liquid
Storage buffer	0.01M PBS, pH 7.4, 0.05% BSA, 50% Glycerol, 0.05% Sodium azide.
Concentration	1 mg/ml
Purity	>95% by SDS-PAGE.
Clonality	Monoclonal
Isotype	IgG
Applications	IP, WB
Target	MAPKAPK2, MAPKAP-K2, MAPKAP kinase 2, MAPKAPK-2, MAP kinase-activated protein kinase 2, MK2, MK-2, MAPK-activated protein kinase 2
Purification	Protein A/G purified from cell culture supernatant.
Endotoxin level	Please contact with the lab for this information.
Accession	P49137
Stability and Storage	Use a manual defrost freezer and avoid repeated freeze thaw cycles. Store at 4 °C for frequent use. Store at -20 °C for twelve months from the date of receipt.

Note

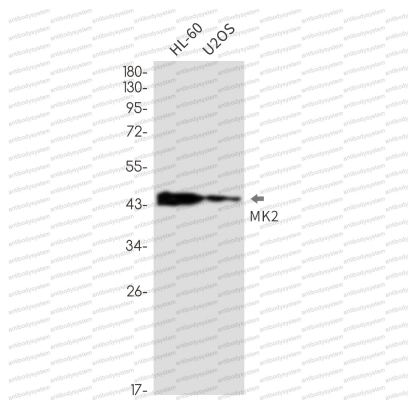
For research use only.

Data Image



Western blot

Western blot analysis of MK2 in mouse heart, mouse skeletal muscle, rat skeletal muscle lysates using MAPKAP Kinase 2 antibody.



Western blot

Western blot analysis of MK2 in HL-60, U2OS lysates using MK2 antibody.