

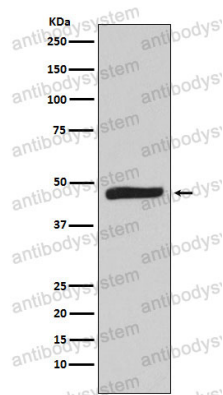
Anti-MAPKAPK2 Antibody (R1X26)

Summary

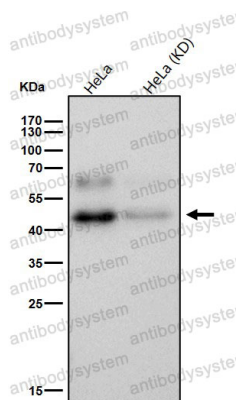
Catalog No.	RHE62702
Clone ID	R1X26
Host species	Rabbit
Tested applications	IP: 1:20-1:50, WB: 1:1000-1:2000
Species reactivity	Human, Mouse, Rat
Form	Liquid
Storage buffer	0.01M PBS, pH 7.4, 0.05% BSA, 50% Glycerol, 0.05% Sodium azide.
Concentration	1 mg/ml
Purity	>95% by SDS-PAGE.
Clonality	Monoclonal
Isotype	IgG
Applications	IP, WB
Target	MAPKAPK2, MAPKAP-K2, MAPKAP kinase 2, MAPKAPK-2, MAP kinase-activated protein kinase 2, MK2, MK-2, MAPK-activated protein kinase 2
Purification	Protein A/G purified from cell culture supernatant.
Endotoxin level	Please contact with the lab for this information.
Accession	P49137
Stability and Storage	Use a manual defrost freezer and avoid repeated freeze thaw cycles. Store at 4 °C for frequent use. Store at -20 °C for twelve months from the date of receipt.

Note

For research use only.

Data Image**Western blot**

Western blot analysis of MAPKAP Kinase 2 expression in Hela cell lysate.

**Western blot**

All lanes use the Antibody at 1:1K dilution for 1 hour at room temperature.