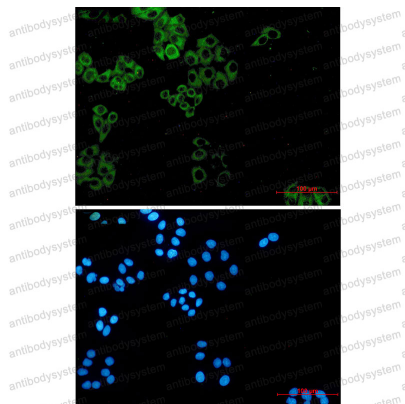


Anti-PXN Antibody (R1X25)

Summary

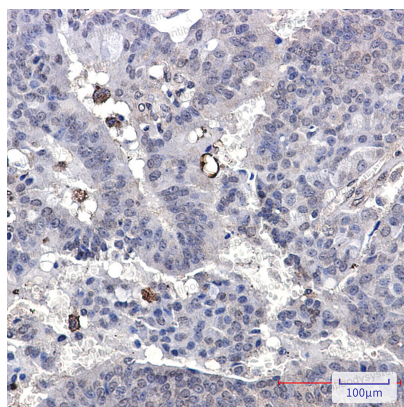
| | |
|------------------------------|---|
| Catalog No. | RHE62403 |
| Clone ID | R1X25 |
| Host species | Rabbit |
| Tested applications | IF: 1:50-1:200, IHC: 1:50-1:100, IP: 1:20, WB: 1:500-1:1000 |
| Species reactivity | Human, Mouse, Rat |
| Form | Liquid |
| Storage buffer | 0.01M PBS, pH 7.4, 0.05% BSA, 50% Glycerol, 0.05% Sodium azide. |
| Concentration | 1 mg/ml |
| Purity | >95% by SDS-PAGE. |
| Clonality | Monoclonal |
| Isotype | IgG |
| Applications | IF, IHC, IP, WB |
| Target | Paxillin, PXN |
| Purification | Protein A/G purified from cell culture supernatant. |
| Endotoxin level | Please contact with the lab for this information. |
| Accession | P49023 |
| Stability and Storage | Use a manual defrost freezer and avoid repeated freeze thaw cycles. Store at 4 °C for frequent use. Store at -20 °C for twelve months from the date of receipt. |
| Note | For research use only. |

Data Image



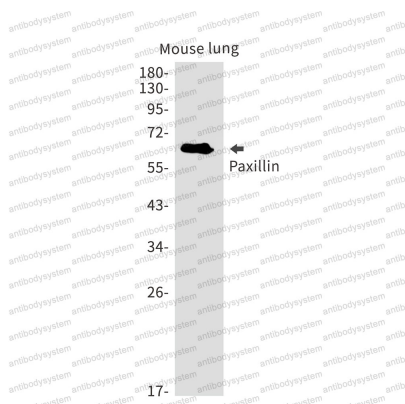
Immunofluorescence

Immunocytochemistry analysis of Paxillin (green) in hela using Paxillin antibody, and DAPI (blue).



Immunohistochemical

Immunohistochemistry analysis of paraffin-embedded Human breast cancer using Paxillin antibody. High-pressure and temperature Sodium Citrate pH 6.0 was used for antigen retrieval.



Western blot

Western blot analysis of Paxillin in mouse lung lysates using Paxillin antibody.



Western blot analysis of Paxillin in C6 lysates using Paxillin antibody.