

Anti-PIK3CG Antibody (R1X21)

Summary

Catalog No.	RHE60901
Clone ID	R1X21
Host species	Rabbit
Tested applications	IP: 1:20, WB: 1:500-1:1000
Species reactivity	Human
Form	Liquid
Storage buffer	0.01M PBS, pH 7.4, 0.05% BSA, 50% Glycerol, 0.05% Sodium azide.
Concentration	1 mg/ml
Purity	>95% by SDS-PAGE.
Clonality	Monoclonal
Isotype	IgG
Applications	IP, WB
Target	PtdIns-3-kinase subunit gamma, Phosphatidylinositol 4,5-bisphosphate 3-kinase catalytic subunit gamma isoform, PtdIns-3-kinase subunit p110-gamma, PI3Kgamma, p120-PI3K, Phosphatidylinositol 4,5-bisphosphate 3-kinase 110 kDa catalytic subunit gamma, PI3-kinase subunit gamma, PI3K-gamma, Phosphoinositide-3-kinase catalytic gamma polypeptide, Serine/threonine protein kinase PIK3CG, p110gamma, PIK3CG
Purification	Protein A/G purified from cell culture supernatant.
Endotoxin level	Please contact with the lab for this information.
Accession	P48736

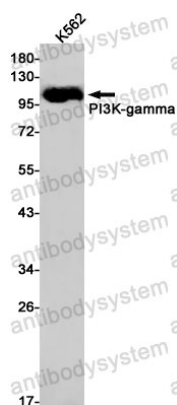
Stability and Storage

Use a manual defrost freezer and avoid repeated freeze thaw cycles. Store at 4 °C for frequent use. Store at -20 °C for twelve months from the date of receipt.

Note

For research use only.

Data Image



Western blot

Western blot analysis of PI3 Kinase p110 gamma in K562 lysates using PI3 Kinase p110 gamma antibody.