

# Anti-GSS Antibody (R1X16)

## Summary

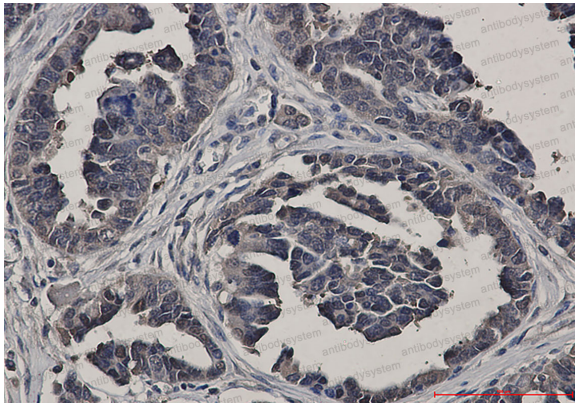
---

<b>Catalog No.</b>	RHE59701
<b>Clone ID</b>	R1X16
<b>Host species</b>	Rabbit
<b>Tested applications</b>	IHC: 1:50-1:100, WB: 1:500-1:1000
<b>Species reactivity</b>	Human, Mouse, Rat
<b>Form</b>	Liquid
<b>Storage buffer</b>	0.01M PBS, pH 7.4, 0.05% BSA, 50% Glycerol, 0.05% Sodium azide.
<b>Concentration</b>	1 mg/ml
<b>Purity</b>	>95% by SDS-PAGE.
<b>Clonality</b>	Monoclonal
<b>Isotype</b>	IgG
<b>Applications</b>	IHC, WB
<b>Target</b>	GSH-S, Glutathione synthase, Glutathione synthetase, GSH synthetase, GSS
<b>Purification</b>	Protein A/G purified from cell culture supernatant.
<b>Endotoxin level</b>	Please contact with the lab for this information.
<b>Accession</b>	P48637
<b>Stability and Storage</b>	Use a manual defrost freezer and avoid repeated freeze thaw cycles. Store at 4 °C for frequent use. Store at -20 °C for twelve months from the date of receipt.

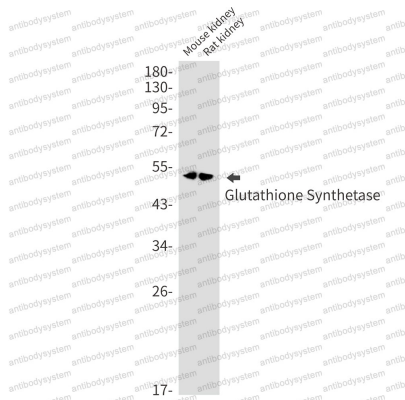
**Note**

For research use only.

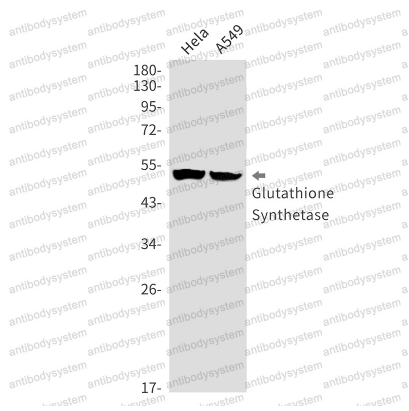
## Data Image

**Immunohistochemical**

Immunohistochemistry analysis of paraffin-embedded Human Cholangiocarcinoma using Glutathione Synthetase antibody. High-pressure and temperature Sodium Citrate pH 6.0 was used for antigen retrieval.

**Western blot**

Western blot analysis of Glutathione Synthetase in mouse kidney, rat kidney lysates using Glutathione Synthetase antibody.



Western blot

Western blot analysis of Glutathione Synthetase in Hela, A549 lysates using Glutathione Synthetase antibody.