

# Anti-GSS Antibody (R1X15)

## Summary

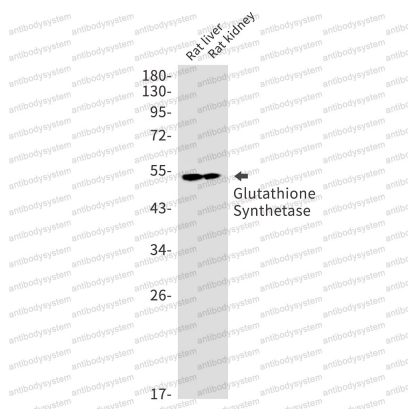
---

<b>Catalog No.</b>	RHE59703
<b>Clone ID</b>	R1X15
<b>Host species</b>	Rabbit
<b>Tested applications</b>	IF: 1:50-1:200, IHC: 1:50-1:100, WB: 1:500-1:1000
<b>Species reactivity</b>	Human, Mouse, Rat
<b>Form</b>	Liquid
<b>Storage buffer</b>	0.01M PBS, pH 7.4, 0.05% BSA, 50% Glycerol, 0.05% Sodium azide.
<b>Concentration</b>	1 mg/ml
<b>Purity</b>	>95% by SDS-PAGE.
<b>Clonality</b>	Monoclonal
<b>Isotype</b>	IgG
<b>Applications</b>	IF, IHC, WB
<b>Target</b>	GSH-S, Glutathione synthase, Glutathione synthetase, GSH synthetase, GSS
<b>Purification</b>	Protein A/G purified from cell culture supernatant.
<b>Endotoxin level</b>	Please contact with the lab for this information.
<b>Accession</b>	P48637
<b>Stability and Storage</b>	Use a manual defrost freezer and avoid repeated freeze thaw cycles. Store at 4 °C for frequent use. Store at -20 °C for twelve months from the date of receipt.

### Note

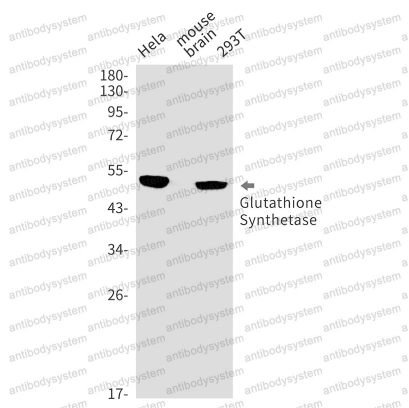
For research use only.

## Data Image



Western blot

Western blot analysis of Glutathione Synthetase in rat kidney, rat liver lysates using Glutathione Synthetase antibody.



Western blot

Western blot analysis of Glutathione Synthetase in Hela, mouse brain, 293T, Jurkat lysates using Glutathione Synthetase antibody.