

# Anti-GRIA4 Antibody (R1X04)

## Summary

---

<b>Catalog No.</b>	RHE55101
<b>Clone ID</b>	R1X04
<b>Host species</b>	Rabbit
<b>Tested applications</b>	FCM: 1:20-1:100, WB: 1:1000-1:2000
<b>Species reactivity</b>	Human, Mouse, Rat
<b>Form</b>	Liquid
<b>Storage buffer</b>	0.01M PBS, pH 7.4, 0.05% BSA, 50% Glycerol, 0.05% Sodium azide.
<b>Concentration</b>	1 mg/ml
<b>Purity</b>	>95% by SDS-PAGE.
<b>Clonality</b>	Monoclonal
<b>Isotype</b>	IgG
<b>Applications</b>	FCM, WB
<b>Target</b>	GluR4, GluA4, AMPA-selective glutamate receptor 4, GRIA4, Glutamate receptor ionotropic, AMPA 4, GluR-4, Glutamate receptor 4, GLUR4, GluR-D
<b>Purification</b>	Protein A/G purified from cell culture supernatant.
<b>Endotoxin level</b>	Please contact with the lab for this information.
<b>Accession</b>	P48058

**Stability and Storage**

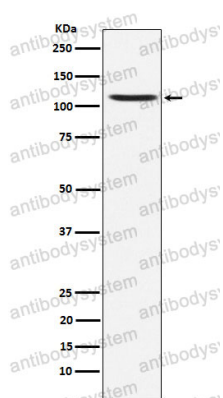
Use a manual defrost freezer and avoid repeated freeze thaw cycles. Store at 4 °C for frequent use. Store at -20 °C for twelve months from the date of receipt.

**Note**

For research use only.

**Data Image**

---



Western blot

Western blot analysis of Iontropic Glutamate receptor 4 expression in SH-SY5Y cell lysate.