

Anti-UQCRFS1 Antibody (R1X01)

Summary

Catalog No.	RHE54001
Clone ID	R1X01
Host species	Rabbit
Tested applications	IF: 1:50-1:200, IHC: 1:50-1:100, IP: 1:20, WB: 1:500-1:1000
Species reactivity	Human, Mouse, Rat
Form	Liquid
Storage buffer	0.01M PBS, pH 7.4, 0.05% BSA, 50% Glycerol, 0.05% Sodium azide.
Concentration	1 mg/ml
Purity	>95% by SDS-PAGE.
Clonality	Monoclonal
Isotype	IgG
Applications	IF, IHC, IP, WB
Target	Rieske iron-sulfur protein, UQCRFS1 mitochondrial targeting sequence, UQCRFS1, Ubiquinol-cytochrome c reductase 8 kDa protein, Cytochrome b-c1 complex subunit 11, Subunit 9, Su9, RISP, Rieske protein UQCRFS1, Cytochrome b-c1 complex subunit 5, Complex III subunit 5, 8 kDa subunit 9, Ubiquinol-cytochrome c reductase iron-sulfur subunit, UQCRFS1 MTS, Complex III subunit IX, Cytochrome b-c1 complex subunit Rieske, mitochondrial
Purification	Protein A/G purified from cell culture supernatant.
Endotoxin level	Please contact with the lab for this information.

Recombinant Proteins & Antibodies

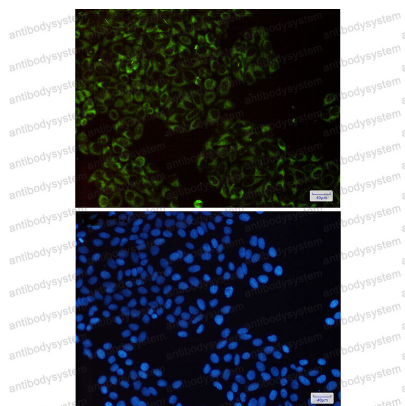
Accession P47985**Stability and Storage**

Use a manual defrost freezer and avoid repeated freeze thaw cycles. Store at 4 °C for frequent use. Store at -20 °C for twelve months from the date of receipt.

Note

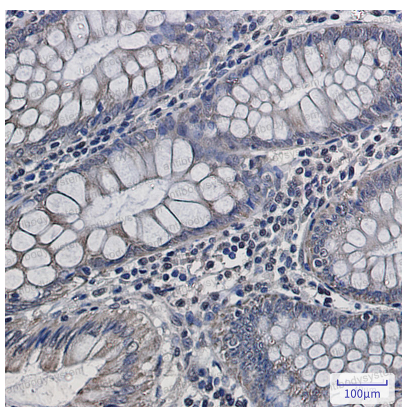
For research use only.

Data Image



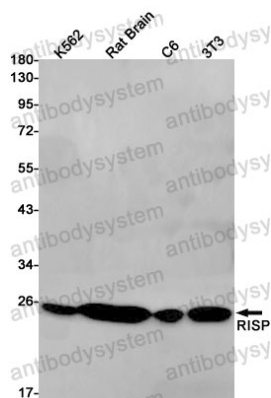
Immunofluorescence

Immunocytochemistry analysis of RISP(green) in HeLa using RISP antibody, and DAPI(blue)



Immunohistochemical

Immunohistochemistry analysis of paraffin-embedded Human colon cancer using UQCRFS1/RISP antibody. High-pressure and temperature Sodium Citrate pH 6.0 was used for antigen retrieval.



Western blot

Western blot analysis of RISP in K562, rat Brain, C6, 3T3 lysates using Complex III Subunit 5 antibody.