

Anti-EIF1AX Antibody (R1W96)

Summary

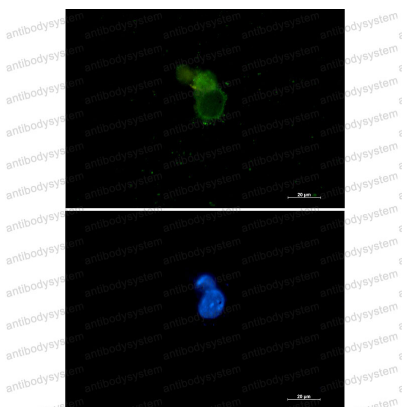
Catalog No.	RHE51501
Clone ID	R1W96
Host species	Rabbit
Tested applications	IF: 1:50-1:200, IHC: 1:50-1:100, IP: 1:20, WB: 1:500-1:1000
Species reactivity	Human, Mouse, Rat
Form	Liquid
Storage buffer	0.01M PBS, pH 7.4, 0.05% BSA, 50% Glycerol, 0.05% Sodium azide.
Concentration	1 mg/ml
Purity	>95% by SDS-PAGE.
Clonality	Monoclonal
Isotype	IgG
Applications	IF, IHC, IP, WB
Target	EIF4C, eIF-4C, EIF1A, eIF-1A X isoform, Eukaryotic translation initiation factor 1A, X-chromosomal, EIF1AX, Eukaryotic translation initiation factor 4C
Purification	Protein A/G purified from cell culture supernatant.
Endotoxin level	Please contact with the lab for this information.
Accession	P47813

Stability and Storage

Use a manual defrost freezer and avoid repeated freeze thaw cycles. Store at 4 °C for frequent use. Store at -20 °C for twelve months from the date of receipt.

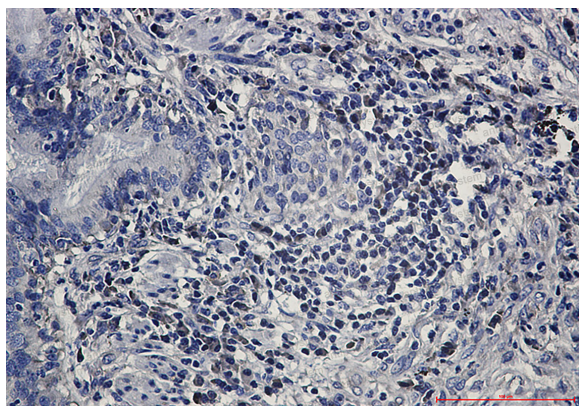
Note

For research use only.

Data Image

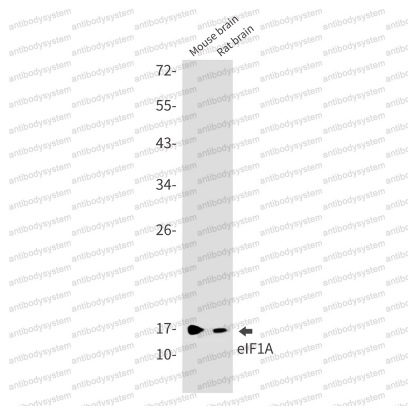
Immunofluorescence

Immunocytochemistry analysis of eIF1A (green) in 293 using eIF1A antibody, and DAPI (blue).



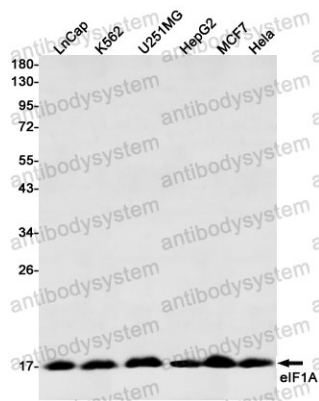
Immunohistochemical

Immunohistochemistry analysis of paraffin-embedded Human lung cancer using eIF1A antibody. High-pressure and temperature Sodium Citrate pH 6.0 was used for antigen retrieval.



Western blot

Western blot analysis of eIF1A in mouse brain, rat brain lysates using eIF1A antibody.



Western blot

Western blot analysis of eIF1A in LnCap, K562, U251MG, HepG2, MCF-7, Hela lysates using eIF1A antibody