

# Anti-BRCC3 Antibody (R1W84)

## Summary

---

<b>Catalog No.</b>	RHE48901
<b>Clone ID</b>	R1W84
<b>Host species</b>	Rabbit
<b>Tested applications</b>	IP: 1:20, WB: 1:500-1:1000
<b>Species reactivity</b>	Human, Mouse, Rat
<b>Form</b>	Liquid
<b>Storage buffer</b>	0.01M PBS, pH 7.4, 0.05% BSA, 50% Glycerol, 0.05% Sodium azide.
<b>Concentration</b>	1 mg/ml
<b>Purity</b>	>95% by SDS-PAGE.
<b>Clonality</b>	Monoclonal
<b>Isotype</b>	IgG
<b>Applications</b>	IP, WB
<b>Target</b>	BRCC3, Lys-63-specific deubiquitinase BRCC36, BRISC complex subunit BRCC36, BRCA1/BRCA2-containing complex subunit 36, BRCC36, BRCA1-A complex subunit BRCC36, BRCA1/BRCA2-containing complex subunit 3, CXorf53, C6.1A
<b>Purification</b>	Protein A/G purified from cell culture supernatant.
<b>Endotoxin level</b>	Please contact with the lab for this information.
<b>Accession</b>	P46736

**Stability and Storage**

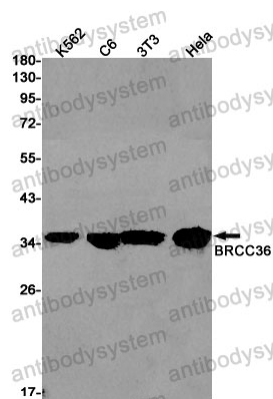
Use a manual defrost freezer and avoid repeated freeze thaw cycles. Store at 4 °C for frequent use. Store at -20 °C for twelve months from the date of receipt.

**Note**

For research use only.

**Data Image**

---



Western blot

Western blot analysis of BRCC36 in rat Brain, C6, 3T3, Hela lysates using BRCC36 antibody.