

Anti-MEK3/MEK6 Antibody (R1W83)

Summary

Catalog No.	RHE48801
Clone ID	R1W83
Host species	Rabbit
Tested applications	IF: 1:50-1:200, IP: 1:20, WB: 1:500-1:1000
Species reactivity	Human, Mouse
Form	Liquid
Storage buffer	0.01M PBS, pH 7.4, 0.05% BSA, 50% Glycerol, 0.05% Sodium azide.
Concentration	1 mg/ml
Purity	>95% by SDS-PAGE.
Clonality	Monoclonal
Isotype	IgG
Applications	IF, IP, WB
Target	SAPK kinase 2, PRKMK3, Dual specificity mitogen-activated protein kinase kinase 3, MAPKK 3, SAPKK-2, MAP2K3, SKK2, MAP kinase kinase 3, SAPKK2, MEK3, Stress-activated protein kinase kinase 2, MKK3, MAPK/ERK kinase 3, MEK 3
Purification	Protein A/G purified from cell culture supernatant.
Endotoxin level	Please contact with the lab for this information.
Accession	P46734, P52564

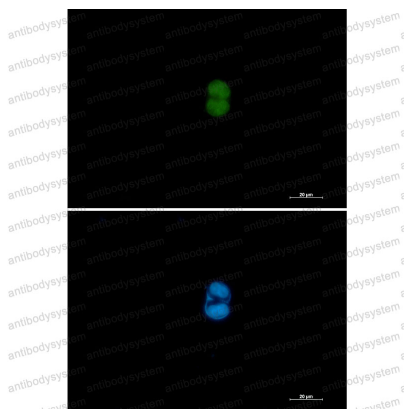
Recombinant Proteins & Antibodies

Stability and Storage

Use a manual defrost freezer and avoid repeated freeze thaw cycles. Store at 4 °C for frequent use. Store at -20 °C for twelve months from the date of receipt.

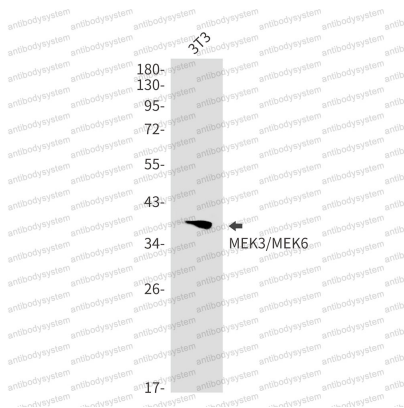
Note

For research use only.

Data Image

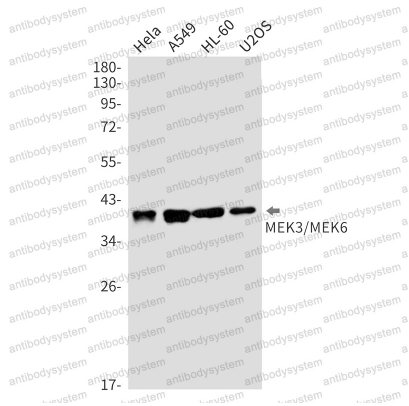
Immunofluorescence

Immunocytochemistry analysis of MEK3/MEK6 (green) in HCT116 using MEK3/MEK6 antibody, and DAPI (blue).



Western blot

Western blot analysis of MEK3/MEK6 in 3T3 lysates using MEK3/MEK6 antibody. Observed band size: 39, 37 kDa.



Western blot

Western blot analysis of MEK3/MEK6 in Hela, A549, HL-60, U2OS lysates using MEK3/MEK6 antibody