

Anti-MAP2K3 Antibody (R1W82)

Summary

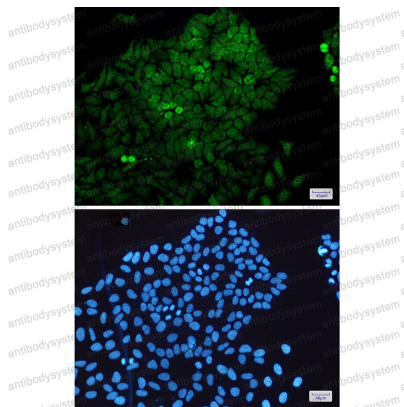
| | |
|----------------------------|--|
| Catalog No. | RHE48803 |
| Clone ID | R1W82 |
| Host species | Rabbit |
| Tested applications | IF: 1:50-1:200, IP: 1:20, WB: 1:500-1:1000 |
| Species reactivity | Human, Mouse, Rat |
| Form | Liquid |
| Storage buffer | 0.01M PBS, pH 7.4, 0.05% BSA, 50% Glycerol, 0.05% Sodium azide. |
| Concentration | 1 mg/ml |
| Purity | >95% by SDS-PAGE. |
| Clonality | Monoclonal |
| Isotype | IgG |
| Applications | IF, IP, WB |
| Target | SAPK kinase 2, PRKMK3, Dual specificity mitogen-activated protein kinase kinase 3, MAPKK 3, SAPKK-2, MAP2K3, SKK2, MAP kinase kinase 3, SAPKK2, MEK3, Stress-activated protein kinase kinase 2, MKK3, MAPK/ERK kinase 3, MEK 3 |
| Purification | Protein A/G purified from cell culture supernatant. |
| Endotoxin level | Please contact with the lab for this information. |
| Accession | P46734 |

Stability and Storage

Use a manual defrost freezer and avoid repeated freeze thaw cycles. Store at 4 °C for frequent use. Store at -20 °C for twelve months from the date of receipt.

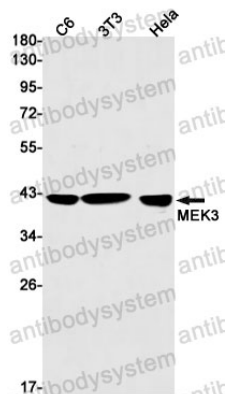
Note

For research use only.

Data Image

Immunofluorescence

Immunocytochemistry analysis of MEK3(green) in HeLa using MEK3 antibody, and DAPI(blue)



Western blot

Western blot analysis of MEK3 in C6, 3T3, HeLa lysates using MEK3 antibody.