

Anti-MEK3/MEK6 Antibody (R1W81)

Summary

Catalog No.	RHE48802
Clone ID	R1W81
Host species	Rabbit
Tested applications	FCM: 1:20-1:100, IF: 1:50-1:200, IHC: 1:100-1:200, IP: 1:20-1:50, WB: 1:1000-1:2000
Species reactivity	Human, Mouse, Rat
Form	Liquid
Storage buffer	0.01M PBS, pH 7.4, 0.05% BSA, 50% Glycerol, 0.05% Sodium azide.
Concentration	1 mg/ml
Purity	>95% by SDS-PAGE.
Clonality	Monoclonal
Isotype	IgG
Applications	FCM, IF, IHC, IP, WB
Target	SAPK kinase 2, PRKMK3, Dual specificity mitogen-activated protein kinase kinase 3, MAPKK 3, SAPKK-2, MAP2K3, SKK2, MAP kinase kinase 3, SAPKK2, MEK3, Stress-activated protein kinase kinase 2, MKK3, MAPK/ERK kinase 3, MEK 3
Purification	Protein A/G purified from cell culture supernatant.
Endotoxin level	Please contact with the lab for this information.
Accession	P46734, P52564

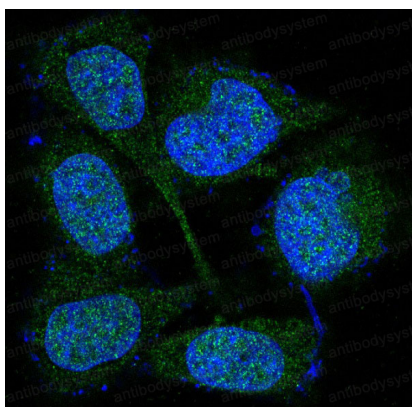
Stability and Storage

Use a manual defrost freezer and avoid repeated freeze thaw cycles. Store at 4 °C for frequent use. Store at -20 °C for twelve months from the date of receipt.

Note

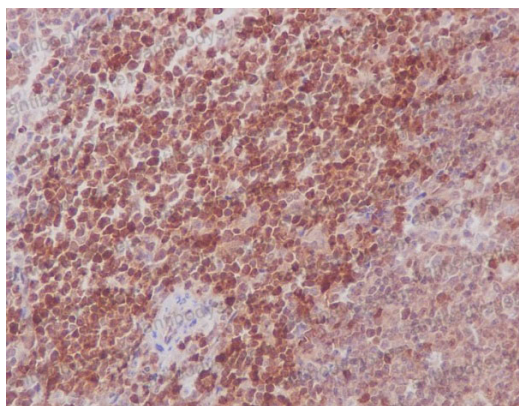
For research use only.

Data Image



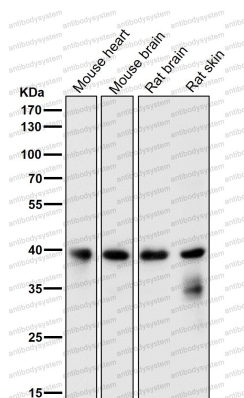
Immunofluorescence

Immunofluorescent analysis of HeLa cells, using MEK3/MEK6 Antibody.



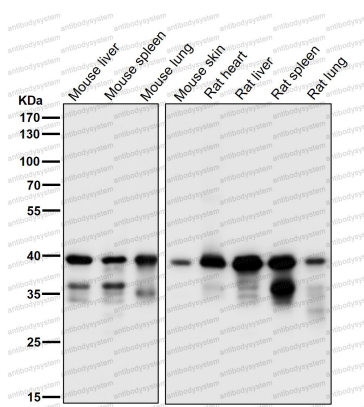
Immunohistochemical

Immunohistochemical analysis of paraffin-embedded mouse spleen, using MEK3/MEK6 Antibody.



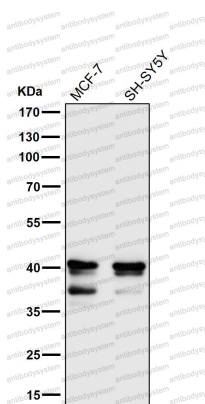
Western blot

All lanes use the Antibody at 1:2K dilution for 1 hour at room temperature.



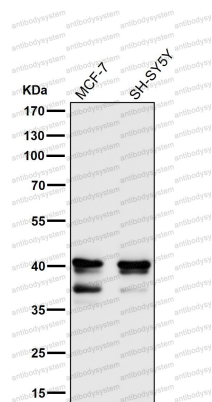
Western blot

All lanes use the Antibody at 1:2K dilution for 1 hour at room temperature.



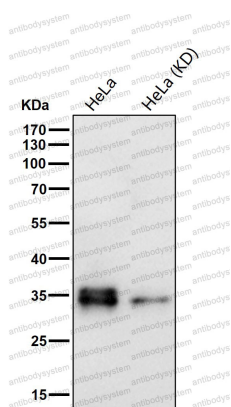
Western blot

All lanes use the Antibody at 1:2K dilution for 1 hour at room temperature.



Western blot

All lanes use the Antibody at 1:2K dilution for 1 hour at room temperature.



Western blot

All lanes use the Antibody at 1:1000 dilution for 1 hour at room temperature.