

Anti-CDKN1B Antibody (R1W78)

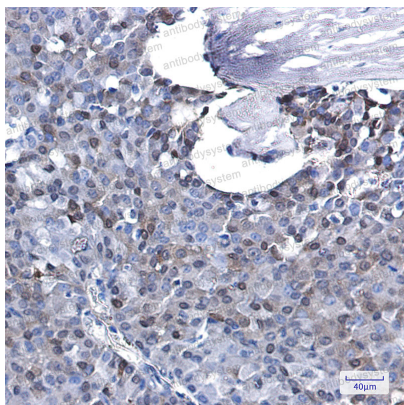
Summary

Catalog No.	RHE48201
Clone ID	R1W78
Host species	Rabbit
Tested applications	IHC: 1:50-1:100, IP: 1:20, WB: 1:500-1:1000
Species reactivity	Human, Mouse, Rat
Form	Liquid
Storage buffer	0.01M PBS, pH 7.4, 0.05% BSA, 50% Glycerol, 0.05% Sodium azide.
Concentration	1 mg/ml
Purity	>95% by SDS-PAGE.
Clonality	Monoclonal
Isotype	IgG
Applications	IHC, IP, WB
Target	Cyclin-dependent kinase inhibitor 1B, KIP1, CDKN1B, p27Kip1, Cyclin-dependent kinase inhibitor p27
Purification	Protein A/G purified from cell culture supernatant.
Endotoxin level	Please contact with the lab for this information.
Accession	P46527
Stability and Storage	Use a manual defrost freezer and avoid repeated freeze thaw cycles. Store at 4 °C for frequent use. Store at -20 °C for twelve months from the date of receipt.

Note

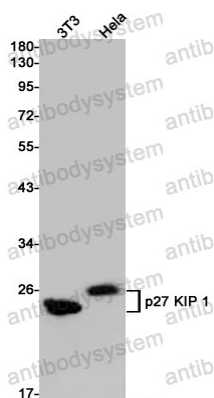
For research use only.

Data Image



Immunohistochemical

Immunohistochemistry analysis of paraffin-embedded Human breast cancer using p27 KIP 1 antibody. High-pressure and temperature Sodium Citrate pH 6.0 was used for antigen retrieval.



Western blot

Western blot analysis of p27 KIP 1 in 3T3, HeLa lysates using p27 Kip 1 antibody.