

# Anti-BAG6 Antibody (R1W75)

## Summary

---

<b>Catalog No.</b>	RHE47902
<b>Clone ID</b>	R1W75
<b>Host species</b>	Rabbit
<b>Tested applications</b>	FCM: 1:20-1:100, IF: 1:50-1:200, IHC: 1:100-1:200, WB: 1:1000-1:2000
<b>Species reactivity</b>	Human, Mouse, Rat
<b>Form</b>	Liquid
<b>Storage buffer</b>	0.01M PBS, pH 7.4, 0.05% BSA, 50% Glycerol, 0.05% Sodium azide.
<b>Concentration</b>	1 mg/ml
<b>Purity</b>	>95% by SDS-PAGE.
<b>Clonality</b>	Monoclonal
<b>Isotype</b>	IgG
<b>Applications</b>	FCM, IF, IHC, WB
<b>Target</b>	Protein G3, BAG-6, HLA-B-associated transcript 3, BAG family molecular chaperone regulator 6, Large proline-rich protein BAG6, BCL2-associated athanogene 6, BAT3, Protein Scythe, G3, BAG6
<b>Purification</b>	Protein A/G purified from cell culture supernatant.
<b>Endotoxin level</b>	Please contact with the lab for this information.
<b>Accession</b>	P46379

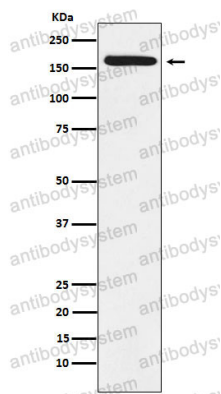
## Stability and Storage

Use a manual defrost freezer and avoid repeated freeze thaw cycles. Store at 4 °C for frequent use. Store at -20 °C for twelve months from the date of receipt.

## Note

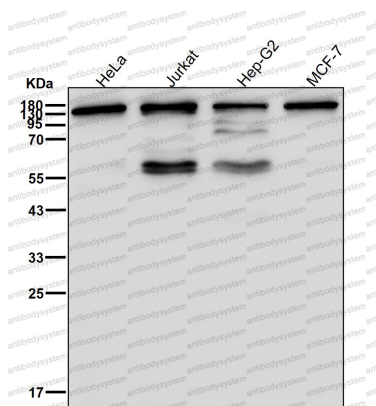
For research use only.

## Data Image



Western blot

Western blot analysis of BAT3 expression in A431 cell lysate.



Western blot

All lanes use the Antibody at 1:2K dilution for 1 hour at room temperature.