

Anti-MAPK8 Antibody (R1W70)

Summary

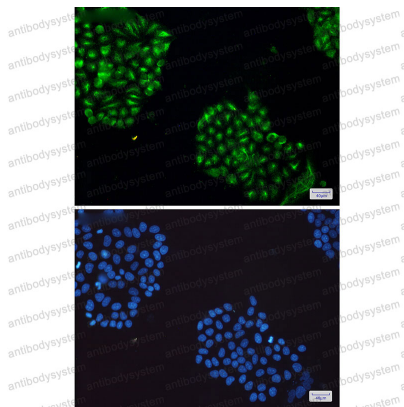
Catalog No.	RHE45807
Clone ID	R1W70
Host species	Rabbit
Tested applications	IF: 1:50-1:200, IP: 1:20, WB: 1:500-1:1000
Species reactivity	Mouse, Rat
Form	Liquid
Storage buffer	0.01M PBS, pH 7.4, 0.05% BSA, 50% Glycerol, 0.05% Sodium azide.
Concentration	1 mg/ml
Purity	>95% by SDS-PAGE.
Clonality	Monoclonal
Isotype	IgG
Applications	IF, IP, WB
Target	MAP kinase 8, JNK1, SAPK1C, Stress-activated protein kinase 1c, Mitogen-activated protein kinase 8, SAPK1, c-Jun N-terminal kinase 1, SAPK1c, MAPK8, Stress-activated protein kinase JNK1, PRKM8, JNK-46, MAPK 8
Purification	Protein A/G purified from cell culture supernatant.
Endotoxin level	Please contact with the lab for this information.
Accession	P45983

Stability and Storage

Use a manual defrost freezer and avoid repeated freeze thaw cycles. Store at 4 °C for frequent use. Store at -20 °C for twelve months from the date of receipt.

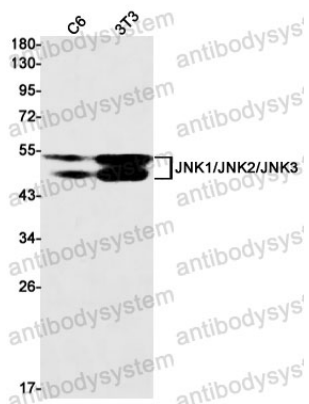
Note

For research use only.

Data Image

Immunofluorescence

Immunocytochemistry analysis of JNK1/2/3 (green) in Hela using JNK1/2/3 antibody, and DAPI(blue)



Western blot

Western blot analysis of JNK1/2/3 in C6, 3T3 lysates using JNK antibody.