

Anti-MAPK8 Antibody (R1W69)

Summary

Catalog No.	RHE45806
Clone ID	R1W69
Host species	Rabbit
Tested applications	IP: 1:20, WB: 1:500-1:1000
Species reactivity	Human, Mouse, Rat, Hamster
Form	Liquid
Storage buffer	0.01M PBS, pH 7.4, 0.05% BSA, 50% Glycerol, 0.05% Sodium azide.
Concentration	1 mg/ml
Purity	>95% by SDS-PAGE.
Clonality	Monoclonal
Isotype	IgG
Applications	IP, WB
Target	MAP kinase 8, JNK1, SAPK1C, Stress-activated protein kinase 1c, Mitogen-activated protein kinase 8, SAPK1, c-Jun N-terminal kinase 1, SAPK1c, MAPK8, Stress-activated protein kinase JNK1, PRKM8, JNK-46, MAPK 8
Purification	Protein A/G purified from cell culture supernatant.
Endotoxin level	Please contact with the lab for this information.
Accession	P45983

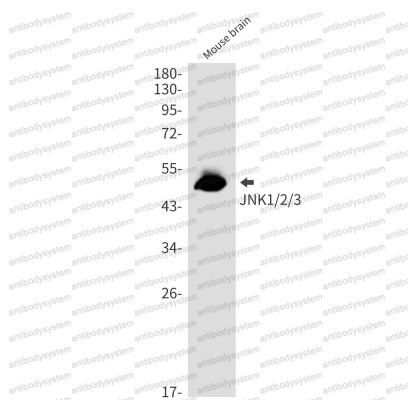
Stability and Storage

Use a manual defrost freezer and avoid repeated freeze thaw cycles. Store at 4 °C for frequent use. Store at -20 °C for twelve months from the date of receipt.

Note

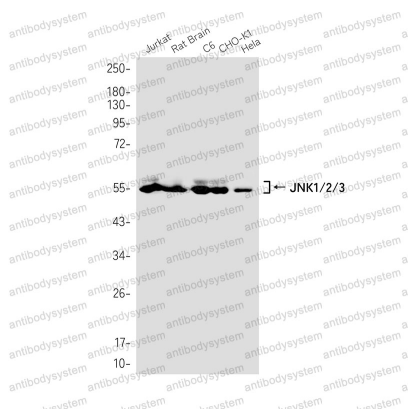
For research use only.

Data Image



Western blot

Western blot analysis of JNK1/2/3 in mouse brain lysates using JNK antibody.



Western blot

Western blot analysis of JNK1/2/3 in Jurkat, rat Brain, C6, CHO-K1, Hela lysates using JNK1/2/3 antibody.