

Anti-CBX5 Antibody (R1W63)

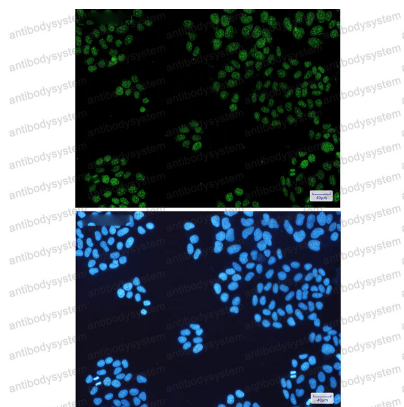
Summary

Catalog No.	RHE45603
Clone ID	R1W63
Host species	Rabbit
Tested applications	IF: 1:50-1:200, IHC: 1:50-1:100, IP: 1:20, WB: 1:500-1:1000
Species reactivity	Human, Mouse, Rat
Form	Liquid
Storage buffer	0.01M PBS, pH 7.4, 0.05% BSA, 50% Glycerol, 0.05% Sodium azide.
Concentration	1 mg/ml
Purity	>95% by SDS-PAGE.
Clonality	Monoclonal
Isotype	IgG
Applications	IF, IHC, IP, WB
Target	Heterochromatin protein 1 homolog alpha, Chromobox protein homolog 5, HP1A, Antigen p25, HP1 alpha, CBX5
Purification	Protein A/G purified from cell culture supernatant.
Endotoxin level	Please contact with the lab for this information.
Accession	P45973
Stability and Storage	Use a manual defrost freezer and avoid repeated freeze thaw cycles. Store at 4 °C for frequent use. Store at -20 °C for twelve months from the date of receipt.

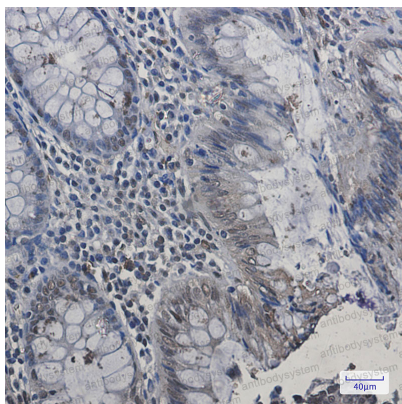
Note

For research use only.

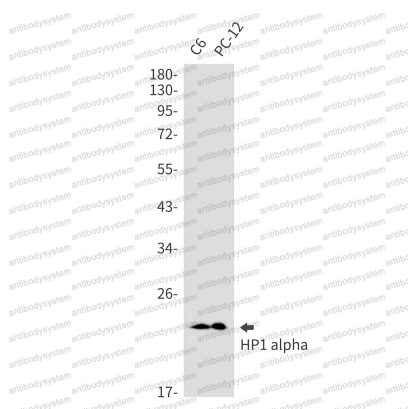
Data Image

**Immunofluorescence**

Immunocytochemistry analysis of HP1 alpha(green)
in Hela using HP1 alpha antibody,and DAPI(blue)

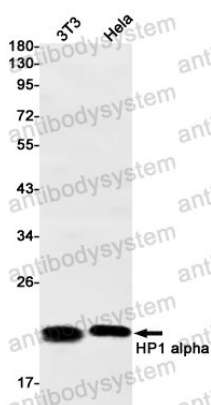
**Immunohistochemical**

Immunohistochemistry analysis of paraffin-
embedded Human colon cancer using HP1 alpha
antibody.High-pressure and temperature Sodium
Citrate pH 6.0 was used for antigen retrieval.



Western blot

Western blot analysis of HP1 alpha in C6, PC-12 lysates using HP1 alpha antibody.



Western blot

Western blot analysis of HP1 alpha in 3T3, HeLa lysates using HP1 alpha antibody.