

Anti-NAMPT Antibody (R1W53)

Summary

Catalog No.	RHE43302
Clone ID	R1W53
Host species	Rabbit
Tested applications	IF: 1:50-1:200, IHC: 1:50-1:100, IP: 1:20, WB: 1:500-1:1000
Species reactivity	Human, Mouse, Rat
Form	Liquid
Storage buffer	0.01M PBS, pH 7.4, 0.05% BSA, 50% Glycerol, 0.05% Sodium azide.
Concentration	1 mg/ml
Purity	>95% by SDS-PAGE.
Clonality	Monoclonal
Isotype	IgG
Applications	IF, IHC, IP, WB
Target	NAMPT, Pre-B-cell colony-enhancing factor 1, NAmPRTase, Pre-B cell-enhancing factor, Nicotinamide phosphoribosyltransferase, Visfatin, PBEF, PBEF1, Nampt
Purification	Protein A/G purified from cell culture supernatant.
Endotoxin level	Please contact with the lab for this information.
Accession	P43490

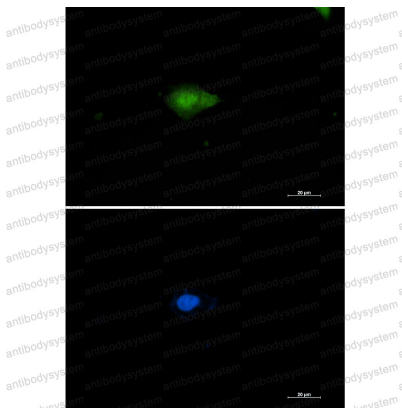
Stability and Storage

Use a manual defrost freezer and avoid repeated freeze thaw cycles. Store at 4 °C for frequent use. Store at -20 °C for twelve months from the date of receipt.

Note

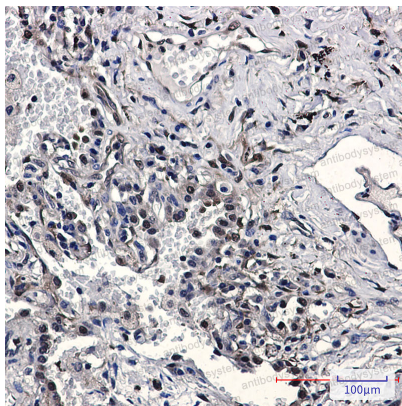
For research use only.

Data Image



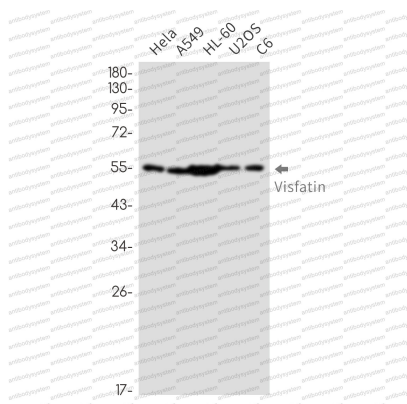
Immunofluorescence

Immunocytochemistry analysis of Namp1 (green) in U87-MG using Namp1 antibody, and DAPI (blue).



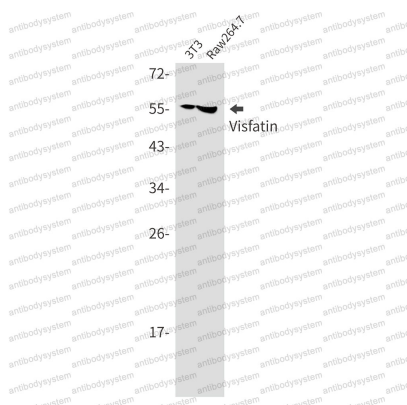
Immunohistochemical

Immunohistochemistry analysis of paraffin-embedded Human lung cancer using Visfatin antibody. High-pressure and temperature Sodium Citrate pH 6.0 was used for antigen retrieval.



Western blot

Western blot analysis of Visfatin in Hela, A549, HL-60, U2OS, C6 lysates using Visfatin antibody



Western blot

Western blot analysis of Visfatin in 3T3, Raw264.7 lysates using Visfatin antibody.