

Anti-MAGEA3 Antibody (R1W50)

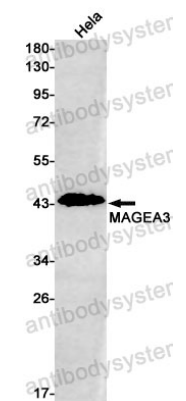
Summary

Catalog No.	RHE41802
Clone ID	R1W50
Host species	Rabbit
Tested applications	WB: 1:500-1:1000
Species reactivity	Human
Form	Liquid
Storage buffer	0.01M PBS, pH 7.4, 0.05% BSA, 50% Glycerol, 0.05% Sodium azide.
Concentration	1 mg/ml
Purity	>95% by SDS-PAGE.
Clonality	Monoclonal
Isotype	IgG
Applications	WB
Target	Antigen MZ2-D, MAGE3, Melanoma-associated antigen 3, CT1.3, MAGE-3 antigen, Cancer/testis antigen 1.3, MAGEA3
Purification	Protein A/G purified from cell culture supernatant.
Endotoxin level	Please contact with the lab for this information.
Accession	P43357
Stability and Storage	Use a manual defrost freezer and avoid repeated freeze thaw cycles. Store at 4 °C for frequent use. Store at -20 °C for twelve months from the date of receipt.

Note

For research use only.

Data Image



Western blot

Western blot analysis of MAGEA3 in HeLa lysates using MAGEA3 antibody.