

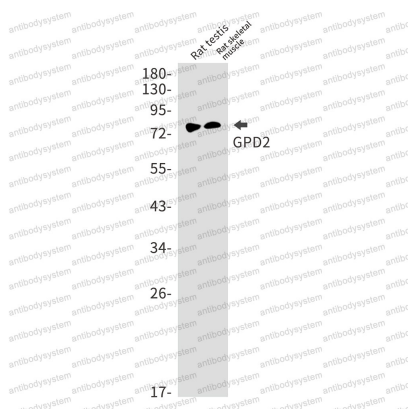
Anti-GPD2 Antibody (R1W48)

Summary

Catalog No.	RHE40901
Clone ID	R1W48
Host species	Rabbit
Tested applications	IP: 1:20, WB: 1:500-1:1000
Species reactivity	Human, Mouse, Rat
Form	Liquid
Storage buffer	0.01M PBS, pH 7.4, 0.05% BSA, 50% Glycerol, 0.05% Sodium azide.
Concentration	1 mg/ml
Purity	>95% by SDS-PAGE.
Clonality	Monoclonal
Isotype	IgG
Applications	IP, WB
Target	mGDH, GPDH-M, mtGPD, mitochondrial glycerophosphate dehydrogenase gene, Glycerol-3-phosphate dehydrogenase, mitochondrial, GPD2, GPD-M
Purification	Protein A/G purified from cell culture supernatant.
Endotoxin level	Please contact with the lab for this information.
Accession	P43304
Stability and Storage	Use a manual defrost freezer and avoid repeated freeze thaw cycles. Store at 4 °C for frequent use. Store at -20 °C for twelve months from the date of receipt.

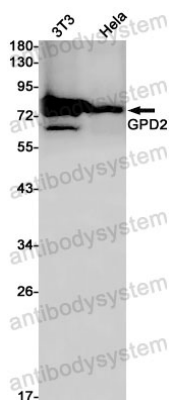
Note For research use only.

Data Image



Western blot

Western blot analysis of GPD2 in rat testis, rat skeletal muscle lysates using GPD2 antibody.



Western blot

Western blot analysis of GPD2 in K562, Hela lysates using GPD2 antibody.