

Anti-PAFAH1B1 Antibody (R1W39)

Summary

Catalog No.	RHE39101
Clone ID	R1W39
Host species	Rabbit
Tested applications	IP: 1:20, WB: 1:500-1:1000
Species reactivity	Rat, Hamster
Form	Liquid
Storage buffer	0.01M PBS, pH 7.4, 0.05% BSA, 50% Glycerol, 0.05% Sodium azide.
Concentration	1 mg/ml
Purity	>95% by SDS-PAGE.
Clonality	Monoclonal
Isotype	IgG
Applications	IP, WB
Target	PAFAH alpha, PAF-AH alpha, MDS, Lissencephaly-1 protein, PAFAH1B1, PAF acetylhydrolase 45 kDa subunit, MDCR, PAFAHA, Platelet-activating factor acetylhydrolase IB subunit beta, LIS1, LIS-1, PAF-AH 45 kDa subunit
Purification	Protein A/G purified from cell culture supernatant.
Endotoxin level	Please contact with the lab for this information.
Accession	P43034

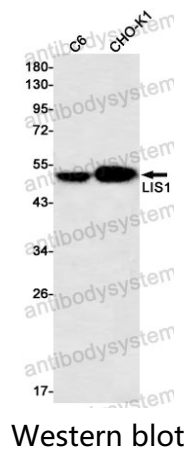
Stability and Storage

Use a manual defrost freezer and avoid repeated freeze thaw cycles. Store at 4 °C for frequent use. Store at -20 °C for twelve months from the date of receipt.

Note

For research use only.

Data Image



Western blot analysis of LIS1 in C6, CHO-K1 lysates using LIS1 antibody.