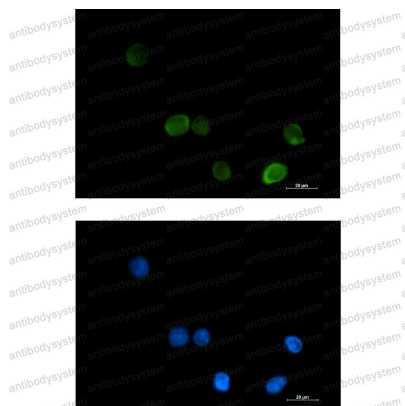


Anti-MTHFR Antibody (R1W34)

Summary

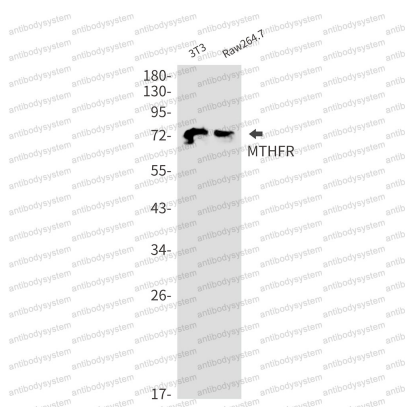
Catalog No.	RHE38501
Clone ID	R1W34
Host species	Rabbit
Tested applications	IF: 1:50-1:200, IP: 1:20, WB: 1:500-1:1000
Species reactivity	Human, Mouse
Form	Liquid
Storage buffer	0.01M PBS, pH 7.4, 0.05% BSA, 50% Glycerol, 0.05% Sodium azide.
Concentration	1 mg/ml
Purity	>95% by SDS-PAGE.
Clonality	Monoclonal
Isotype	IgG
Applications	IF, IP, WB
Target	Methylenetetrahydrofolate reductase, MTHFR
Purification	Protein A/G purified from cell culture supernatant.
Endotoxin level	Please contact with the lab for this information.
Accession	P42898
Stability and Storage	Use a manual defrost freezer and avoid repeated freeze thaw cycles. Store at 4 °C for frequent use. Store at -20 °C for twelve months from the date of receipt.
Note	For research use only.

Data Image



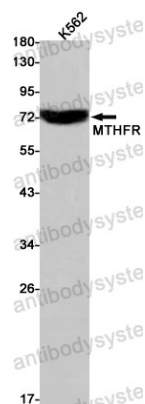
Immunofluorescence

Immunocytochemistry analysis of MTHFR (green) in K562 using MTHFR antibody, and DAPI (blue).



Western blot

Western blot analysis of MTHFR in 3T3, Raw264.7 lysates using MTHFR antibody.



Western blot

Western blot analysis of MTHFR in K562 lysates using MTHFR antibody