

Anti-CXCL5/ENA-78 Antibody (R1W32)

Summary

Catalog No.	RHE38101
Clone ID	R1W32
Host species	Rabbit
Tested applications	IF: 1:50-1:200, IP: 1:20-1:50, WB: 1:1000-1:2000
Species reactivity	Human
Form	Liquid
Storage buffer	0.01M PBS, pH 7.4, 0.05% BSA, 50% Glycerol, 0.05% Sodium azide.
Concentration	1 mg/ml
Purity	>95% by SDS-PAGE.
Clonality	Monoclonal
Isotype	IgG
Applications	IF, IP, WB
Target	C-X-C motif chemokine 5, ENA-78(1-78), Neutrophil-activating peptide ENA-78, ENA78, SCYB5, Small-inducible cytokine B5, CXCL5, Epithelial-derived neutrophil-activating protein 78
Purification	Protein A/G purified from cell culture supernatant.
Endotoxin level	Please contact with the lab for this information.
Accession	P42830

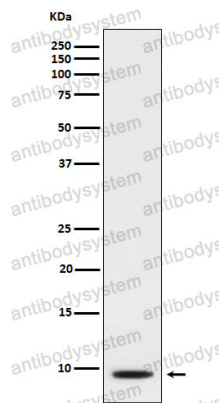
Stability and Storage

Use a manual defrost freezer and avoid repeated freeze thaw cycles. Store at 4 °C for frequent use. Store at -20 °C for twelve months from the date of receipt.

Note

For research use only.

Data Image



Western blot

Western blot analysis of CXCL5 expression in A549 cell lysate treated with TNF alpha and TPA .