

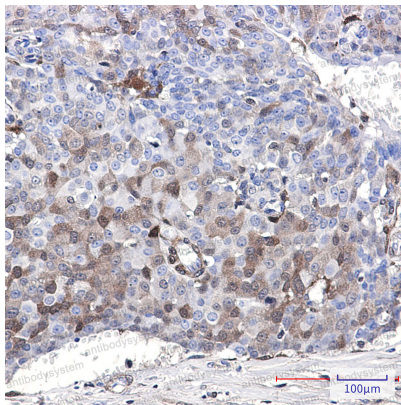
Anti-CDKN2C Antibody (R1W31)

Summary

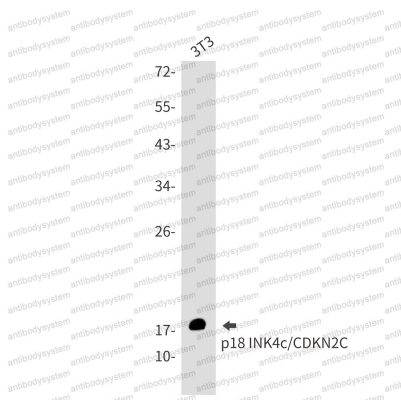
Catalog No.	RHE37901
Clone ID	R1W31
Host species	Rabbit
Tested applications	IHC: 1:50-1:100, IP: 1:20, WB: 1:500-1:1000
Species reactivity	Human, Mouse, Rat
Form	Liquid
Storage buffer	0.01M PBS, pH 7.4, 0.05% BSA, 50% Glycerol, 0.05% Sodium azide.
Concentration	1 mg/ml
Purity	>95% by SDS-PAGE.
Clonality	Monoclonal
Isotype	IgG
Applications	IHC, IP, WB
Target	Cyclin-dependent kinase 4 inhibitor C, CDKN6, p18-INK6, Cyclin-dependent kinase 6 inhibitor, p18-INK4c, CDKN2C
Purification	Protein A/G purified from cell culture supernatant.
Endotoxin level	Please contact with the lab for this information.
Accession	P42773
Stability and Storage	Use a manual defrost freezer and avoid repeated freeze thaw cycles. Store at 4 °C for frequent use. Store at -20 °C for twelve months from the date of receipt.

Note

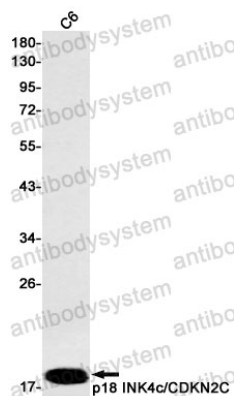
For research use only.

Data Image**Immunohistochemical**

Immunohistochemistry analysis of paraffin-embedded Human breast cancer using p18 INK4c antibody. High-pressure and temperature Sodium Citrate pH 6.0 was used for antigen retrieval.

**Western blot**

Western blot analysis of p18 INK4c/CDKN2C in 3T3 lysates using CDKN2C antibody.



Western blot

Western blot analysis of p18 INK4c/CDKN2C in C6 lysates using p18 INK4c/CDKN2C antibody.