

Anti-CDKN2C Antibody (R1W30)

Summary

Catalog No.	RHE37902
Clone ID	R1W30
Host species	Rabbit
Tested applications	IF: 1:50-1:200, IHC: 1:100-1:200, IP: 1:20-1:50, WB: 1:1000-1:2000
Species reactivity	Human, Mouse, Rat
Form	Liquid
Storage buffer	0.01M PBS, pH 7.4, 0.05% BSA, 50% Glycerol, 0.05% Sodium azide.
Concentration	1 mg/ml
Purity	>95% by SDS-PAGE.
Clonality	Monoclonal
Isotype	IgG
Applications	IF, IHC, IP, WB
Target	Cyclin-dependent kinase 4 inhibitor C, CDKN6, p18-INK6, Cyclin-dependent kinase 6 inhibitor, p18-INK4c, CDKN2C
Purification	Protein A/G purified from cell culture supernatant.
Endotoxin level	Please contact with the lab for this information.
Accession	P42773
Stability and Storage	Use a manual defrost freezer and avoid repeated freeze thaw cycles. Store at 4 °C for frequent use. Store at -20 °C for twelve months from the date of receipt.

Note

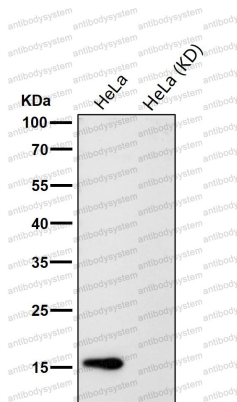
For research use only.

Data Image



Western blot

Western blot analysis of CDKN2C expression in Ramos cell lysate.



Western blot

All lanes use the Antibody at 1:1K dilution for 1 hour at room temperature.