

Anti-CDKN2A/p16INK4a Antibody (R1W27)

Summary

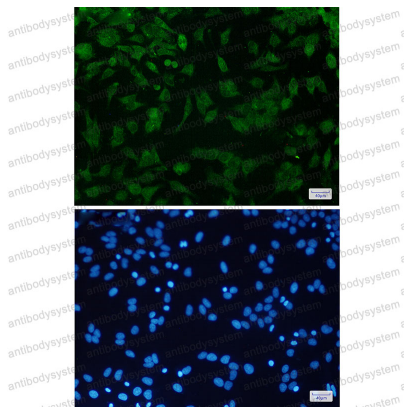
Catalog No.	RHE37703
Clone ID	R1W27
Host species	Rabbit
Tested applications	IF: 1:50-1:200, WB: 1:500-1:1000
Species reactivity	Human, Mouse
Form	Liquid
Storage buffer	0.01M PBS, pH 7.4, 0.05% BSA, 50% Glycerol, 0.05% Sodium azide.
Concentration	1 mg/ml
Purity	>95% by SDS-PAGE.
Clonality	Monoclonal
Isotype	IgG
Applications	IF, WB
Target	p16-INK4, Multiple tumor suppressor 1, MTS-1, MTS1, Cyclin-dependent kinase 4 inhibitor A, p16-INK4a, Cyclin-dependent kinase inhibitor 2A, CDKN2A, p16INK4A, CDKN2, CDK4I
Purification	Protein A/G purified from cell culture supernatant.
Endotoxin level	Please contact with the lab for this information.
Accession	P42771

Stability and Storage

Use a manual defrost freezer and avoid repeated freeze thaw cycles. Store at 4 °C for frequent use. Store at -20 °C for twelve months from the date of receipt.

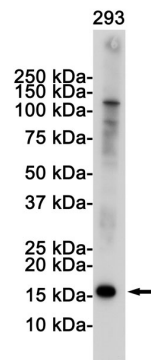
Note

For research use only.

Data Image

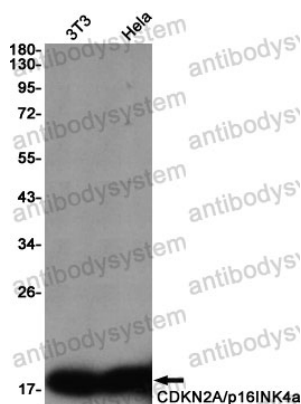
Immunofluorescence

Immunocytochemistry analysis of CDKN2A/p16INK4a(green) in HeLa using CDKN2A/p16INK4a antibody, and DAPI(blue)



Western blot

Western blot analysis of CDKN2A/p16INK4a in 293 lysates using CDKN2A antibody.



Western blot

Western blot analysis of CDKN2A/p16INK4a in 3T3, HeLa lysates using CDKN2A/p16INK4a antibody.