

Anti-Phospho-GRIA1/GluR-1 (Ser845) Antibody (R1W10)

Summary

Catalog No.	RHE34606
Clone ID	R1W10
Host species	Rabbit
Tested applications	WB: 1:500-1:1000
Species reactivity	Human, Rat
Form	Liquid
Storage buffer	0.01M PBS, pH 7.4, 0.05% BSA, 50% Glycerol, 0.05% Sodium azide.
Concentration	1 mg/ml
Purity	>95% by SDS-PAGE.
Clonality	Monoclonal
Isotype	IgG
Applications	WB
Target	GluR-A, GRIA1, GLUH1, GluR-1, Glutamate receptor ionotropic, AMPA 1, GluR-K1, GLUR1, Glutamate receptor 1, AMPA-selective glutamate receptor 1, GluA1
Purification	Protein A/G purified from cell culture supernatant.
Endotoxin level	Please contact with the lab for this information.
Accession	P42261

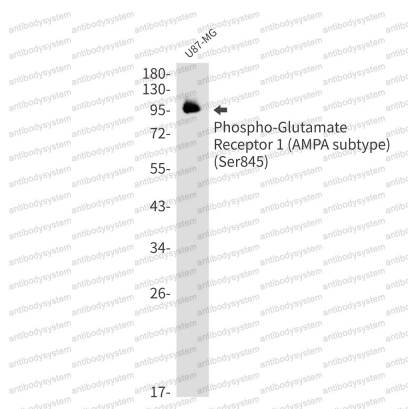
Stability and Storage

Use a manual defrost freezer and avoid repeated freeze thaw cycles. Store at 4 °C for frequent use. Store at -20 °C for twelve months from the date of receipt.

Note

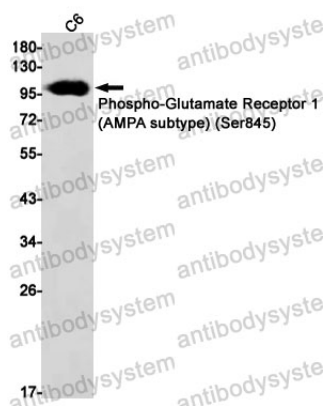
For research use only.

Data Image



Western blot

Western blot analysis of Phospho-Glutamate Receptor 1 (AMPA subtype) (Ser845) in U87-MG lysates using Phospho-Glutamate Receptor 1 (AMPA Subtype) (Ser845) antibody.



Western blot

Western blot analysis of Phospho-Glutamate Receptor 1 (AMPA subtype) (Ser845) in C6 lysates using Phospho-Glutamate Receptor 1 (AMPA subtype) (Ser845) antibody.