

Anti-STAT1 Antibody (R1W02)

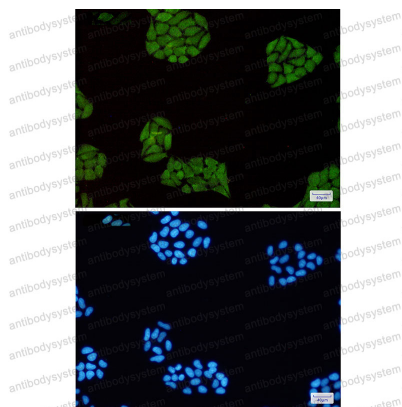
Summary

Catalog No.	RHE34307
Clone ID	R1W02
Host species	Rabbit
Tested applications	IF: 1:50-1:200, IP: 1:20, WB: 1:500-1:1000
Species reactivity	Human
Form	Liquid
Storage buffer	0.01M PBS, pH 7.4, 0.05% BSA, 50% Glycerol, 0.05% Sodium azide.
Concentration	1 mg/ml
Purity	>95% by SDS-PAGE.
Clonality	Monoclonal
Isotype	IgG
Applications	IF, IP, WB
Target	Signal transducer and activator of transcription 1-alpha/beta, STAT1, Transcription factor ISGF-3 components p91/p84
Purification	Protein A/G purified from cell culture supernatant.
Endotoxin level	Please contact with the lab for this information.
Accession	P42224
Stability and Storage	Use a manual defrost freezer and avoid repeated freeze thaw cycles. Store at 4 °C for frequent use. Store at -20 °C for twelve months from the date of receipt.

Note

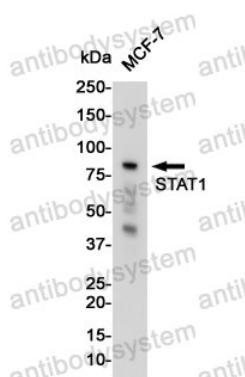
For research use only.

Data Image



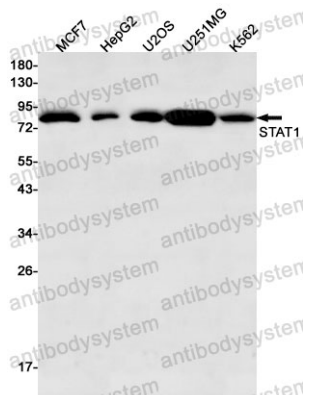
Immunofluorescence

Immunocytochemistry analysis of STAT1(green) in Hela using STAT1 antibody, and DAPI(blue)



Western blot

Western blot analysis of STAT1 in MCF-7 lysates using STAT1 antibody.



Western blot

Western blot analysis of STAT1 in MCF-7, HepG2, U2OS, U251MG, K562 lysates using STAT1 antibody.