

Anti-Phospho-STAT1 (Ser727) Antibody (R1W01)

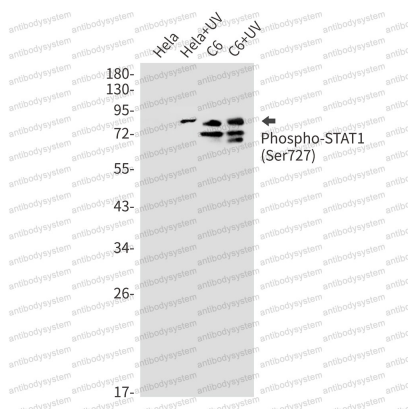
Summary

Catalog No.	RHE34306
Clone ID	R1W01
Host species	Rabbit
Tested applications	IHC: 1:50-1:100, WB: 1:500-1:1000
Species reactivity	Human, Mouse, Rat
Form	Liquid
Storage buffer	0.01M PBS, pH 7.4, 0.05% BSA, 50% Glycerol, 0.05% Sodium azide.
Concentration	1 mg/ml
Purity	>95% by SDS-PAGE.
Clonality	Monoclonal
Isotype	IgG
Applications	IHC, WB
Target	Signal transducer and activator of transcription 1-alpha/beta, STAT1, Transcription factor ISGF-3 components p91/p84
Purification	Protein A/G purified from cell culture supernatant.
Endotoxin level	Please contact with the lab for this information.
Accession	P42224
Stability and Storage	Use a manual defrost freezer and avoid repeated freeze thaw cycles. Store at 4 °C for frequent use. Store at -20 °C for twelve months from the date of receipt.

Note

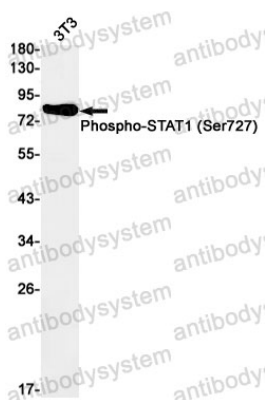
For research use only.

Data Image



Western blot

Western blot analysis of Phospho-STAT1 (Ser727) in Hela, Hela+UV, C6, C6+UV lysates using Phospho-STAT1 (Ser727) antibody.



Western blot

Western blot analysis of Phospho-STAT1 (Ser727) in 3T3 lysates using Phospho-STAT1 (Ser727) antibody.