

Anti-MLH1 Antibody (R1V73)

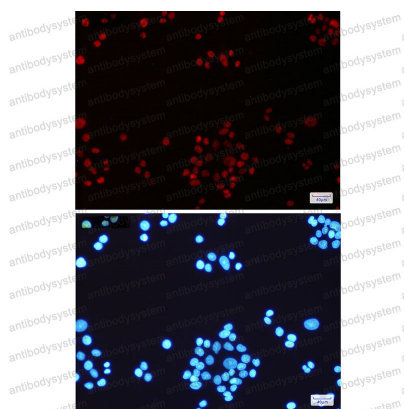
Summary

Catalog No.	RHE27601
Clone ID	R1V73
Host species	Rabbit
Tested applications	IF: 1:50-1:200, IP: 1:20, WB: 1:500-1:1000
Species reactivity	Human, Mouse, Rat
Form	Liquid
Storage buffer	0.01M PBS, pH 7.4, 0.05% BSA, 50% Glycerol, 0.05% Sodium azide.
Concentration	1 mg/ml
Purity	>95% by SDS-PAGE.
Clonality	Monoclonal
Isotype	IgG
Applications	IF, IP, WB
Target	COCA2, DNA mismatch repair protein Mlh1, MutL protein homolog 1, MLH1
Purification	Protein A/G purified from cell culture supernatant.
Endotoxin level	Please contact with the lab for this information.
Accession	P40692
Stability and Storage	Use a manual defrost freezer and avoid repeated freeze thaw cycles. Store at 4 °C for frequent use. Store at -20 °C for twelve months from the date of receipt.

Note

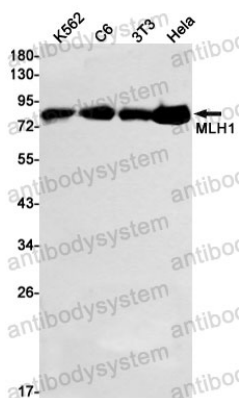
For research use only.

Data Image



Immunofluorescence

Immunocytochemistry analysis of MLH1(green) in HeLa using MLH1 antibody, and DAPI(blue)



Western blot

Western blot analysis of MLH1 in K562, C6, 3T3, HeLa lysates using MLH1 antibody.