

Anti-PSMB10 Antibody (R1V71)

Summary

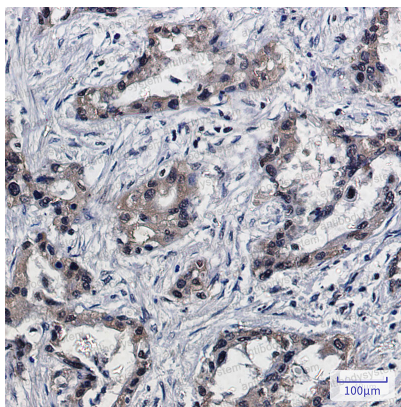
Catalog No.	RHE26601
Clone ID	R1V71
Host species	Rabbit
Tested applications	IHC: 1:50-1:100, WB: 1:500-1:1000
Species reactivity	Human, Mouse, Rat
Form	Liquid
Storage buffer	0.01M PBS, pH 7.4, 0.05% BSA, 50% Glycerol, 0.05% Sodium azide.
Concentration	1 mg/ml
Purity	>95% by SDS-PAGE.
Clonality	Monoclonal
Isotype	IgG
Applications	IHC, WB
Target	Multicatalytic endopeptidase complex subunit MECL-1, MECL1, Macropain subunit MECL-1, Proteasome MECL-1, LMP10, PSMB10, Low molecular mass protein 10, Proteasome subunit beta-2i, Proteasome subunit beta type-10
Purification	Protein A/G purified from cell culture supernatant.
Endotoxin level	Please contact with the lab for this information.
Accession	P40306

Stability and Storage

Use a manual defrost freezer and avoid repeated freeze thaw cycles. Store at 4 °C for frequent use. Store at -20 °C for twelve months from the date of receipt.

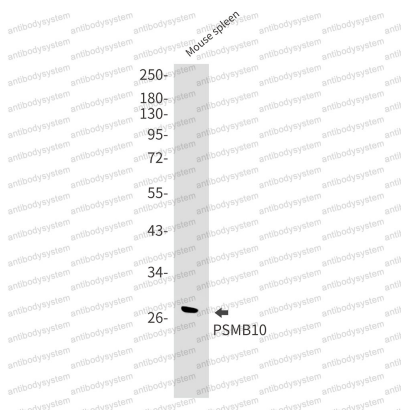
Note

For research use only.

Data Image

Immunohistochemical

Immunohistochemistry analysis of paraffin-embedded Human lung cancer using PSMB10 antibody. High-pressure and temperature Sodium Citrate pH 6.0 was used for antigen retrieval.



Western blot

Western blot analysis of PSMB10 in mouse spleen lysates using PSMB10 antibody.



Western blot

Western blot analysis of PSMB10 in C6, HeLa lysates using PSMB10 antibody.