

Anti-PSMB10 Antibody (R1V68)

Summary

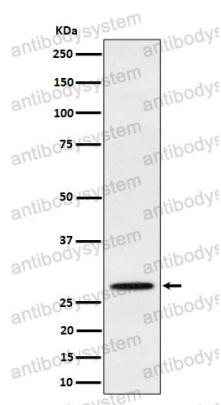
Catalog No.	RHE26602
Clone ID	R1V68
Host species	Rabbit
Tested applications	IHC: 1:100-1:200, WB: 1:1000-1:2000
Species reactivity	Human, Mouse, Rat
Form	Liquid
Storage buffer	0.01M PBS, pH 7.4, 0.05% BSA, 50% Glycerol, 0.05% Sodium azide.
Concentration	1 mg/ml
Purity	>95% by SDS-PAGE.
Clonality	Monoclonal
Isotype	IgG
Applications	IHC, WB
Target	Multicatalytic endopeptidase complex subunit MECL-1, MECL1, Macropain subunit MECL-1, Proteasome MECL-1, LMP10, PSMB10, Low molecular mass protein 10, Proteasome subunit beta-2i, Proteasome subunit beta type-10
Purification	Protein A/G purified from cell culture supernatant.
Endotoxin level	Please contact with the lab for this information.
Accession	P40306

Stability and Storage

Use a manual defrost freezer and avoid repeated freeze thaw cycles. Store at 4 °C for frequent use. Store at -20 °C for twelve months from the date of receipt.

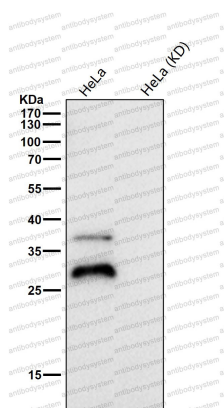
Note

For research use only.

Data Image

Western blot

Western blot analysis of PSMB10 expression in Raji cell lysate.



Western blot

All lanes use the Antibody at 1:1K dilution for 1 hour at room temperature.