

Anti-FEN1 Antibody (R1V61)

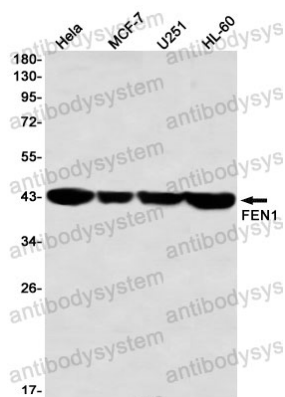
Summary

Catalog No.	RHE24401
Clone ID	R1V61
Host species	Rabbit
Tested applications	WB: 1:500-1:1000
Species reactivity	Human
Form	Liquid
Storage buffer	0.01M PBS, pH 7.4, 0.05% BSA, 50% Glycerol, 0.05% Sodium azide.
Concentration	1 mg/ml
Purity	>95% by SDS-PAGE.
Clonality	Monoclonal
Isotype	IgG
Applications	WB
Target	FEN-1, Maturation factor 1, hFEN-1, DNase IV, RAD2, FEN1, Flap endonuclease 1, MF1, Flap structure-specific endonuclease 1
Purification	Protein A/G purified from cell culture supernatant.
Endotoxin level	Please contact with the lab for this information.
Accession	P39748
Stability and Storage	Use a manual defrost freezer and avoid repeated freeze thaw cycles. Store at 4 °C for frequent use. Store at -20 °C for twelve months from the date of receipt.

Note

For research use only.

Data Image



Western blot

Western blot analysis of FEN1 in HeLa, MCF-7, U251, HL-60 lysates using FEN1 antibody.